



Science

Plants

Life Cycles



The background of the slide features a vibrant green field with several sunflowers. The sunflowers have bright yellow petals and dark brown centers. The stems are green with large, rounded leaves. The overall style is a simple, cartoonish illustration.

Aim

- I can explain the life cycle of plants.
- I can suggest a way we can tell that plants are living things.

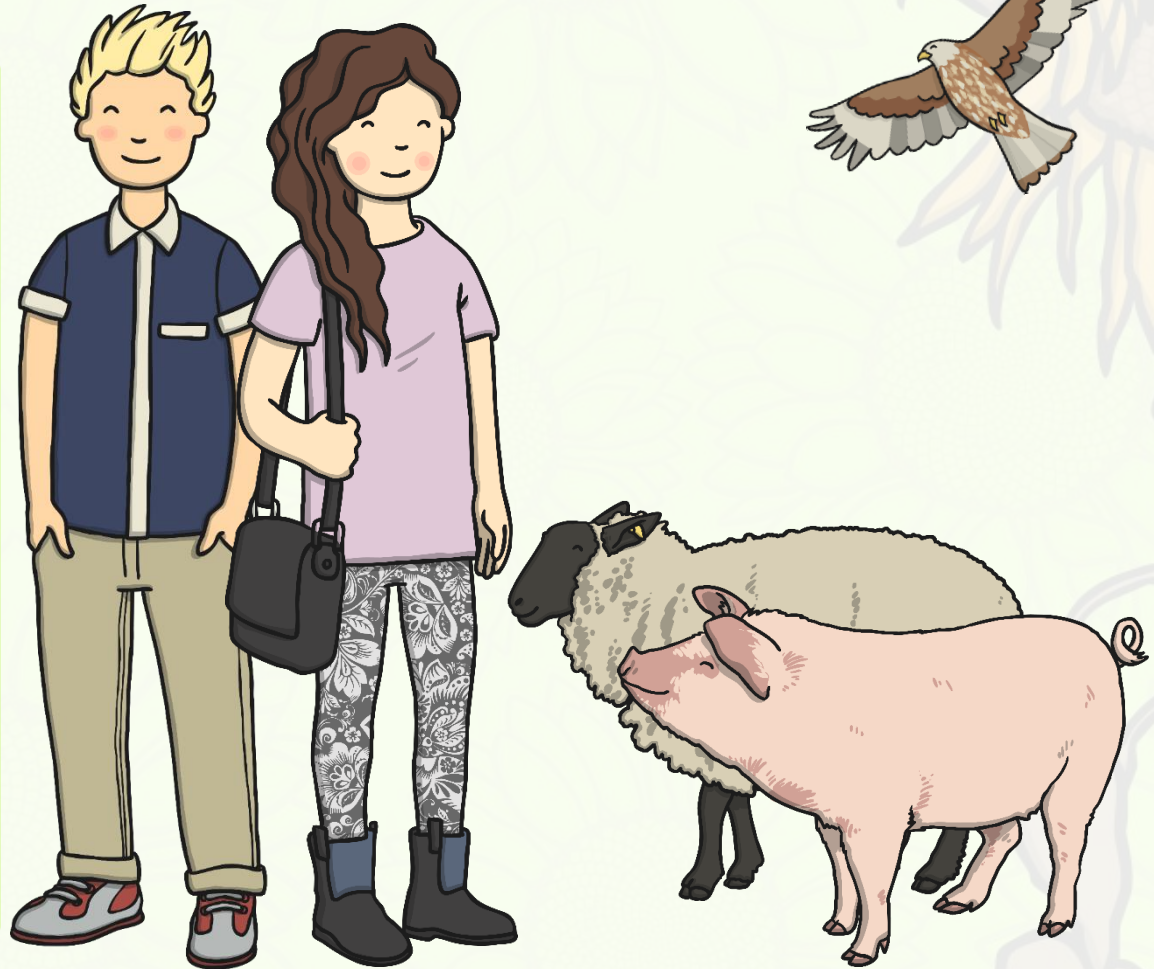
Success Criteria

- I can describe stages in the life cycle of a plant.
- I can order the life cycle of a plant.
- I can explain that plants are living things.
- I can explain something plants do that shows us that plants are living things.

Plants Are Living Things

Plants and trees are alive like humans and other animals.

How can we tell that plants are living things?

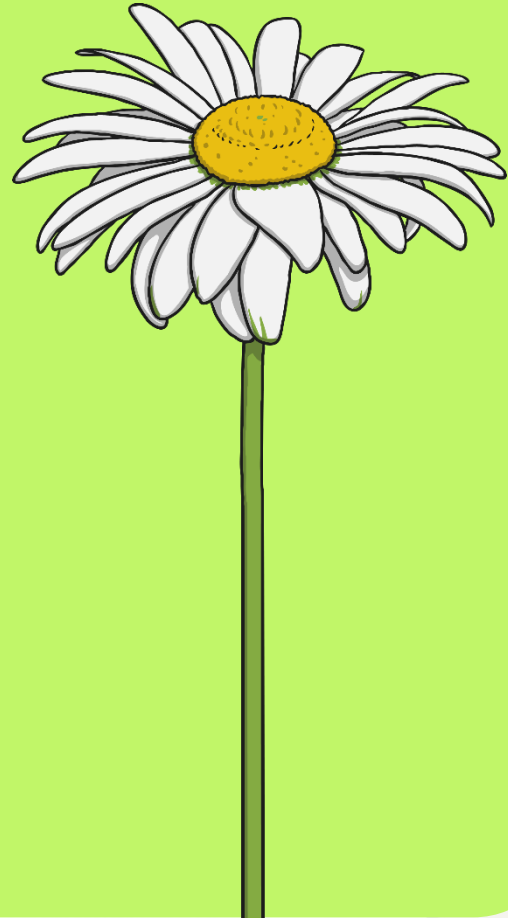


Life Processes

How can we tell that plants are living things?

All living things do certain things to stay alive.
These are called life processes.

Animals, including humans, do these things. Plants
do too, although they do them in different ways.



Click the button
below to find
out more.



Life Processes



Plants can **move** and **grow**, and they **sense** changes in their environment.

How is this similar to what humans and other animals do?



Roots grow in all directions to find soil and water.



A sunflower moves to turn its face towards the sun.

The mimosa plant curls up when you touch it! Click the button below to see the mimosa plant in action.



Life Processes



Plants need to take in **nutrition** and **air** to survive. They also need to get rid of **waste**.

How do animals, including humans, get what they need to stay alive?
How do they get rid of waste?



Plants absorb water and nutrients through their roots.



Through their leaves, they take in light from the sun and carbon dioxide from the air.



Left over gases and water leave the plant from the leaves.

Life Processes



Plants can **reproduce** to make new plants.



Some plants make seeds that grow into new plants.



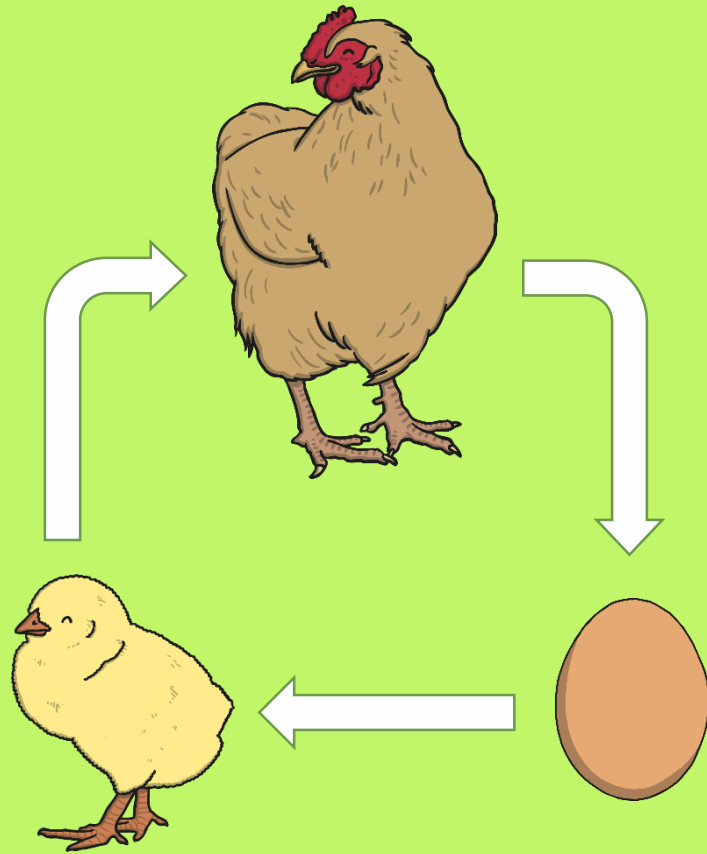
Some plants make baby plants.

How do humans and other animals reproduce?

Life Cycles

Humans, other animals,
plants and all living things
have a life cycle.

This is the life cycle of a
hen.



Bean Plant Life Cycle

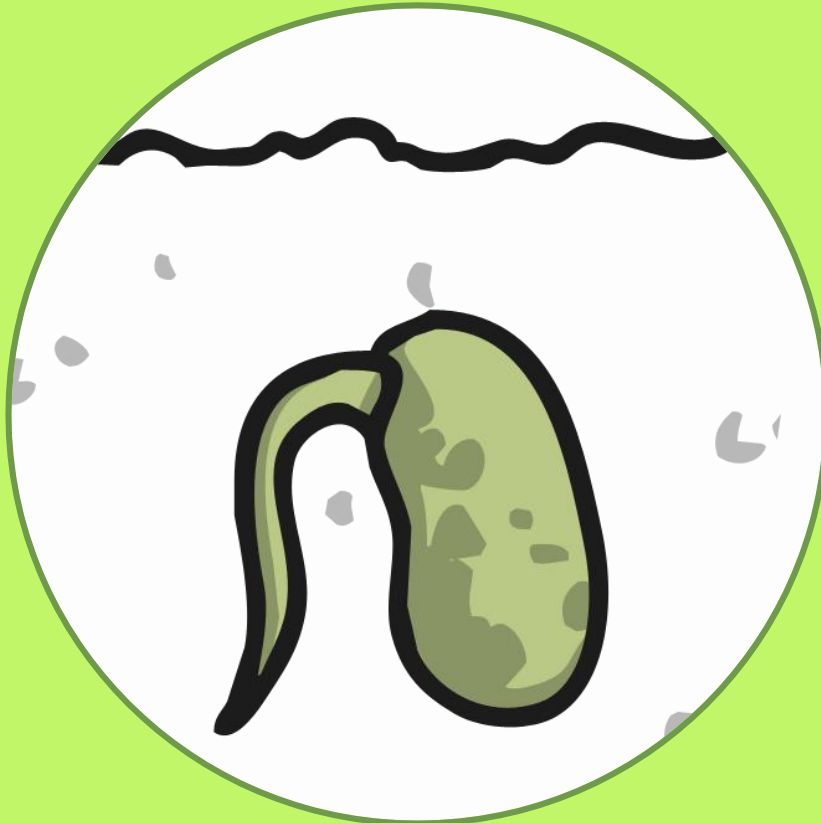
The bean plant life cycle begins with a bean that has fallen or been picked from a bean plant.

The bean is a seed of the bean plant.



Bean Plant Life Cycle

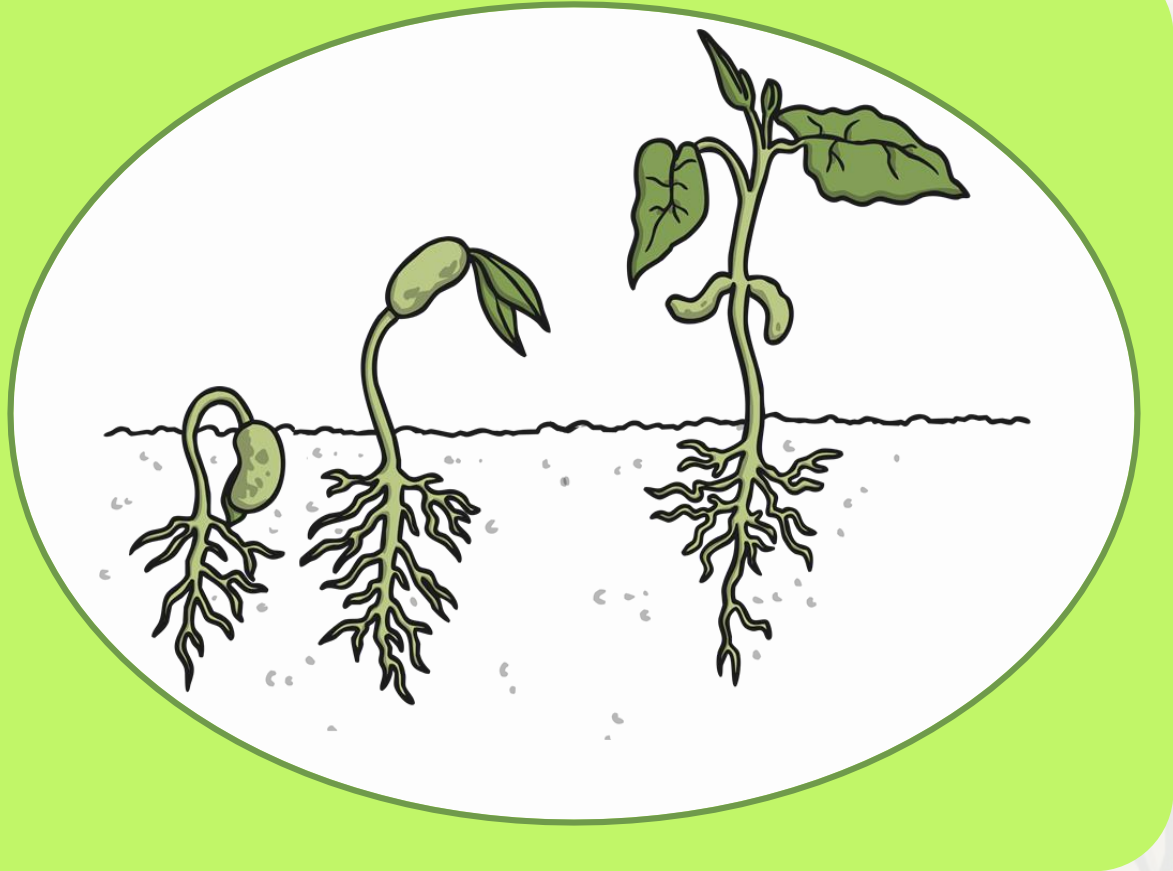
A planted bean seed germinates and, after 2-3 days, a shoot appears.



Bean Plant Life Cycle

The bean seed will start to take root and a stem will appear.

The bean uses the food in the seed to grow taller.



Bean Plant Life Cycle

If the bean plant has water and sunlight, it will grow tall and then it will flower.



Bean Plant Life Cycle

Eventually pods of beans will grow on the bean plant. Each one of these is a seed.



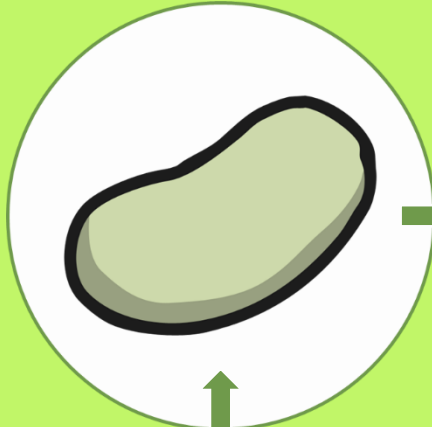
Bean Plant Life Cycle

Each seed can fall into the soil and become a new seedling, ready to grow into a whole new bean plant.

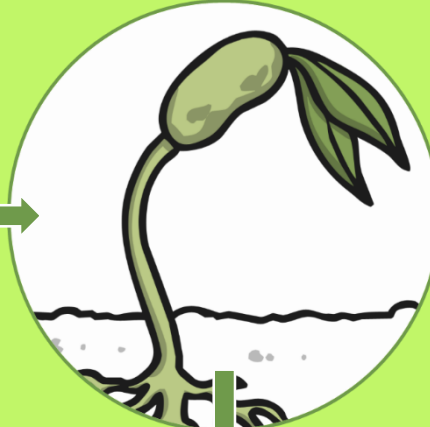


Bean Plant Life Cycle

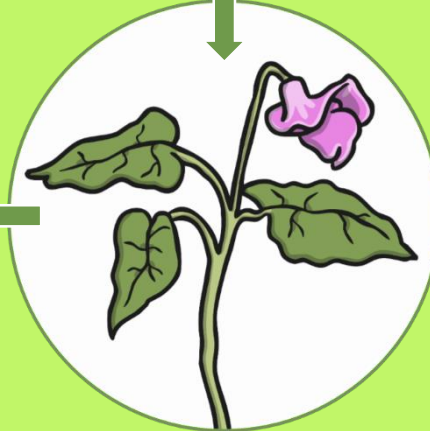
Bean



Seedling



Flowering
Plant



Bean Pods



Sunflower Life Cycle




Can you order
the life cycle of
a sunflower?

Sunflower Plant Life Cycle


○ ○ ○

Cut and stick the life cycle of a sunflower plant in the correct order.


First,	Next,
Last,	Then,




flower



sunflower plant



seed



seeds fall

twinkl planit

Science | Year 2 | Plants | Life Cycles | Lesson 3

