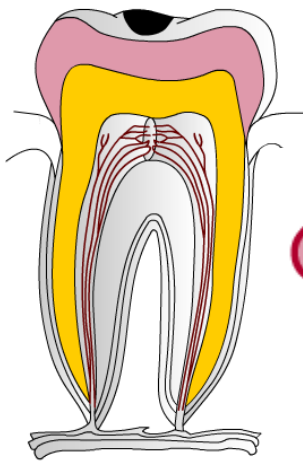
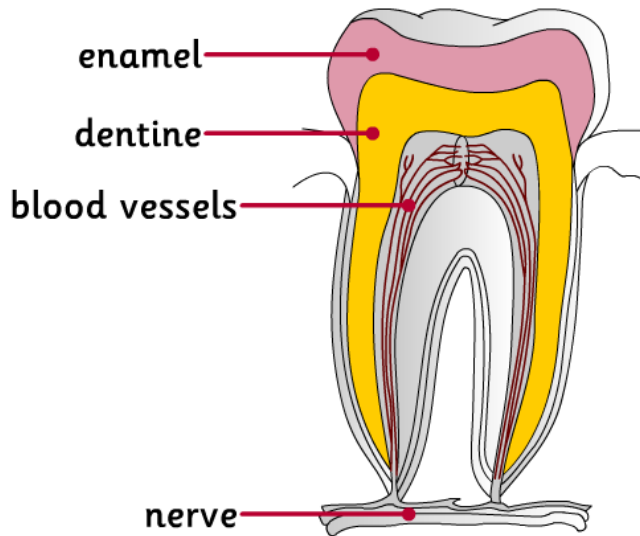
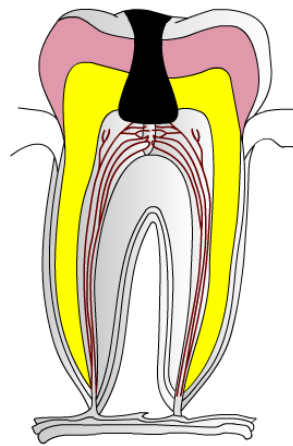


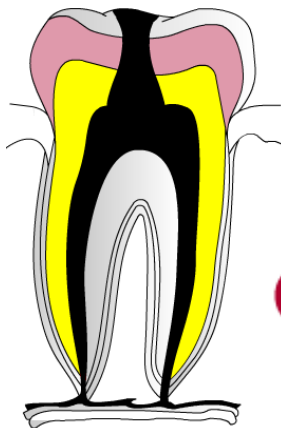
What's inside a tooth?



Bacteria turns food into acid, making a hole in the enamel.

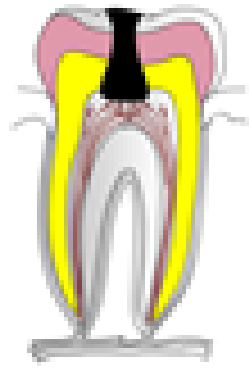


The hole gets bigger and reaches the dentine.



Bacteria damages the blood vessels and nerves so the tooth must be taken out.

Tooth Decay

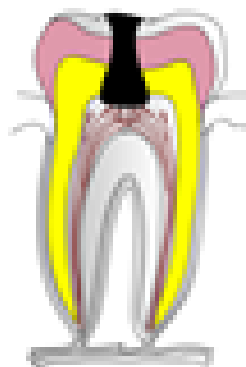


- The hole gets bigger and reaches the dentine.

- Bacteria turns food into acid, making a hole in the enamel.

- Bacteria damages the blood vessels and nerves so the tooth must be taken out.

Tooth Decay



- The hole gets bigger and reaches the dentine.

- Bacteria turns food into acid, making a hole in the enamel.

- Bacteria damages the blood vessels and nerves so the tooth must be taken out.