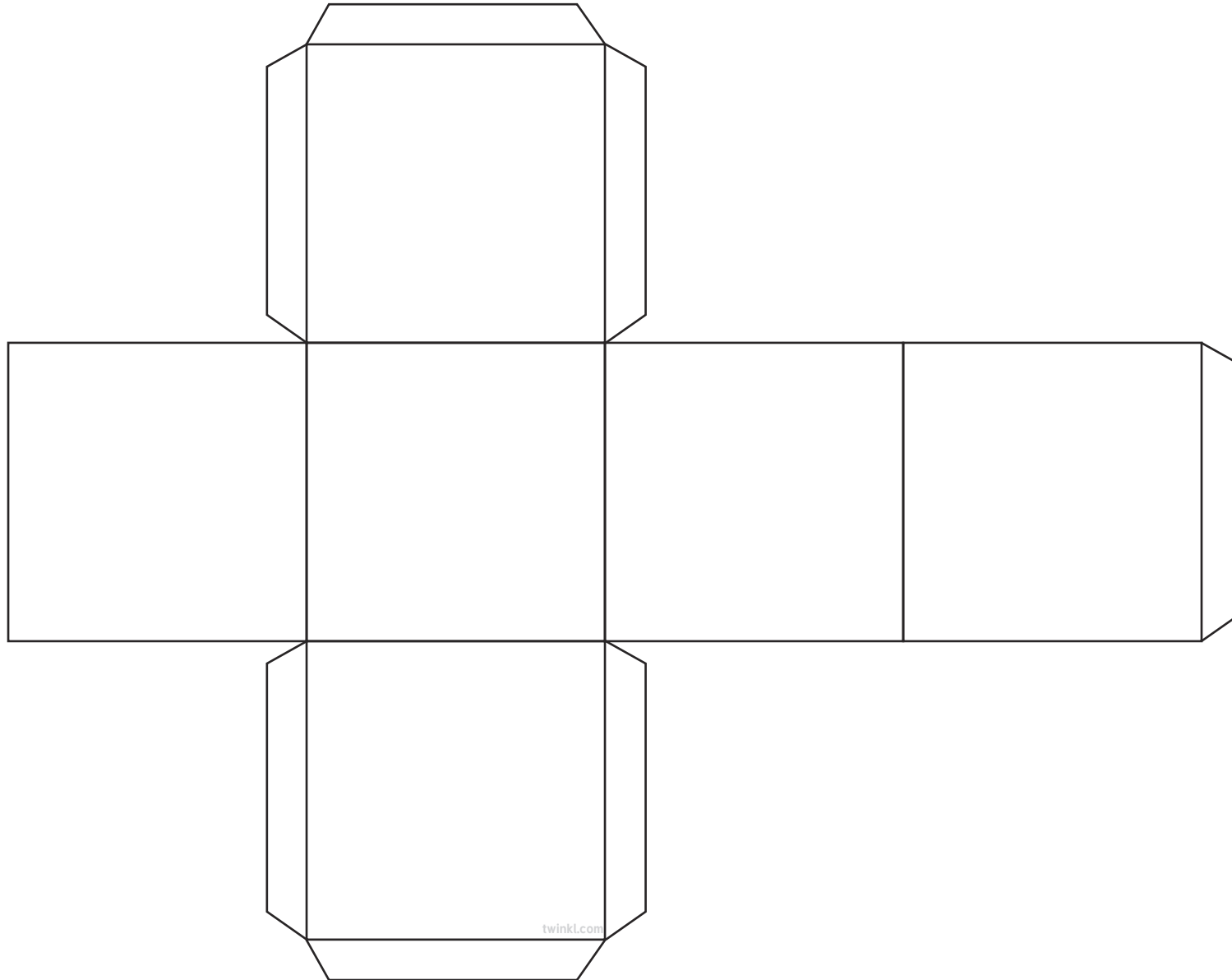


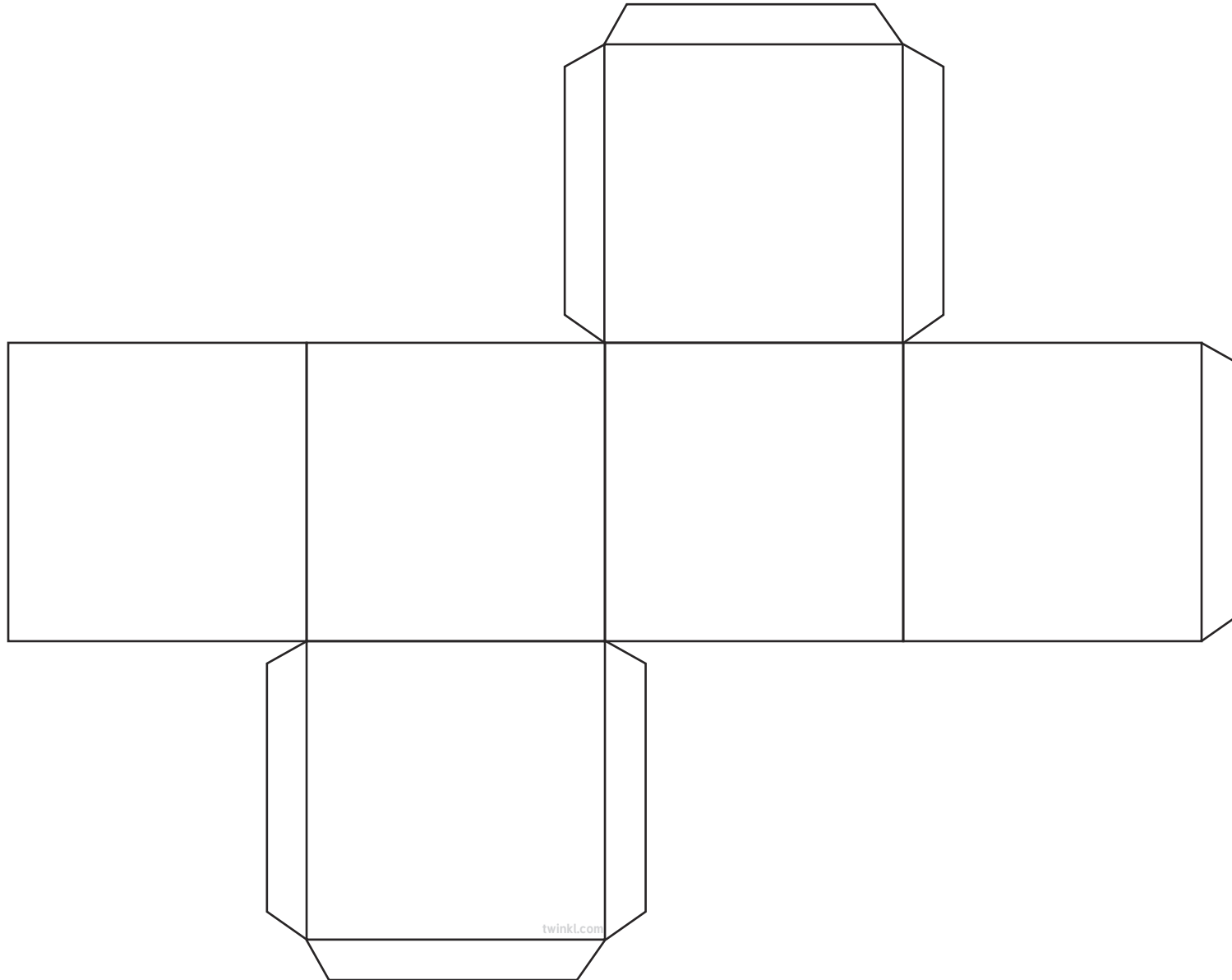
# Net of a Cube

This is a net for a cube. Print it out and then stick it onto thin card. Cut it out and then score along the lines and fold them. Stick together with small amounts of glue.



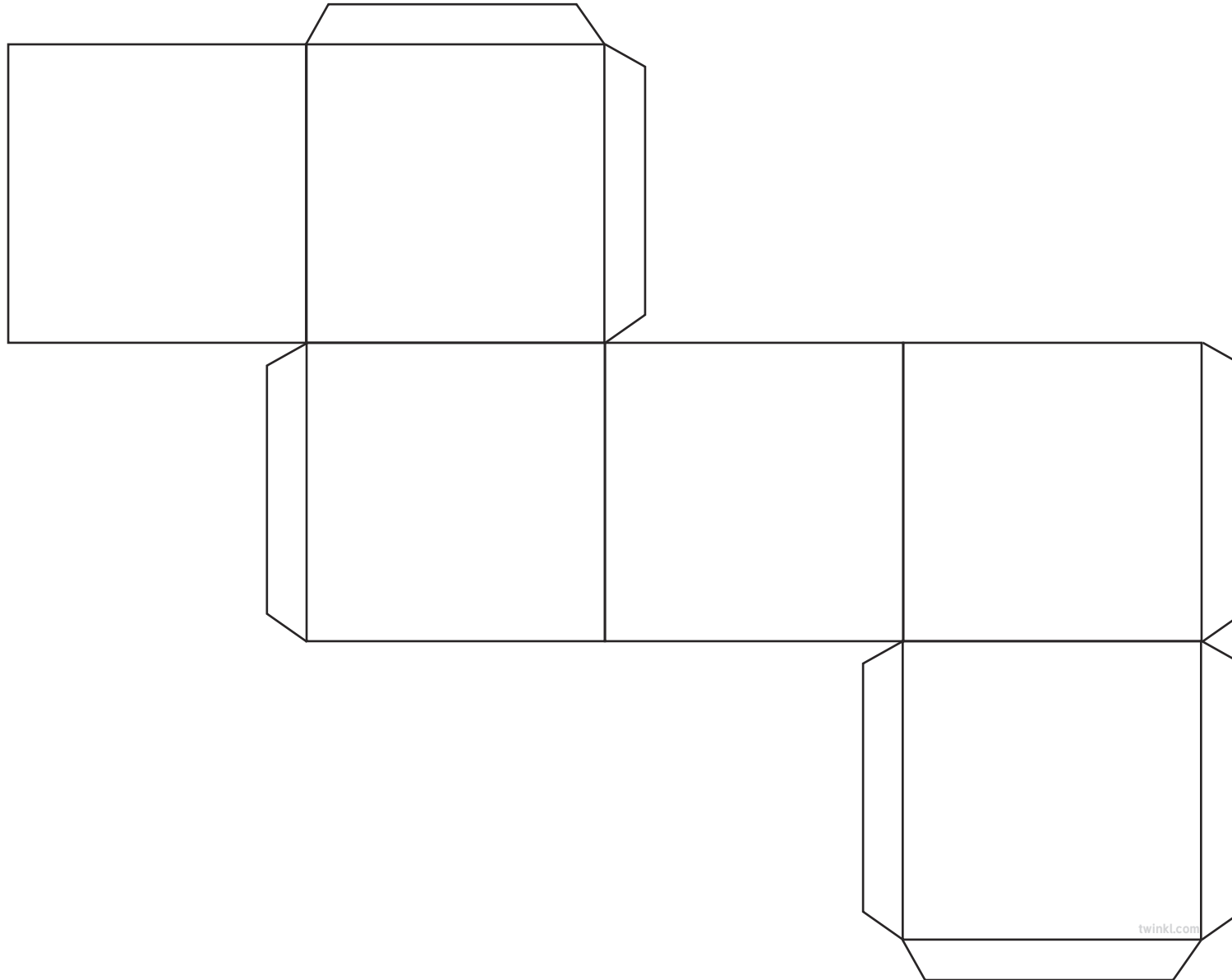
# Net of a Cube

This is a net for a cube. Print it out and then stick it onto thin card. Cut it out and then score along the lines and fold them. Stick together with small amounts of glue.



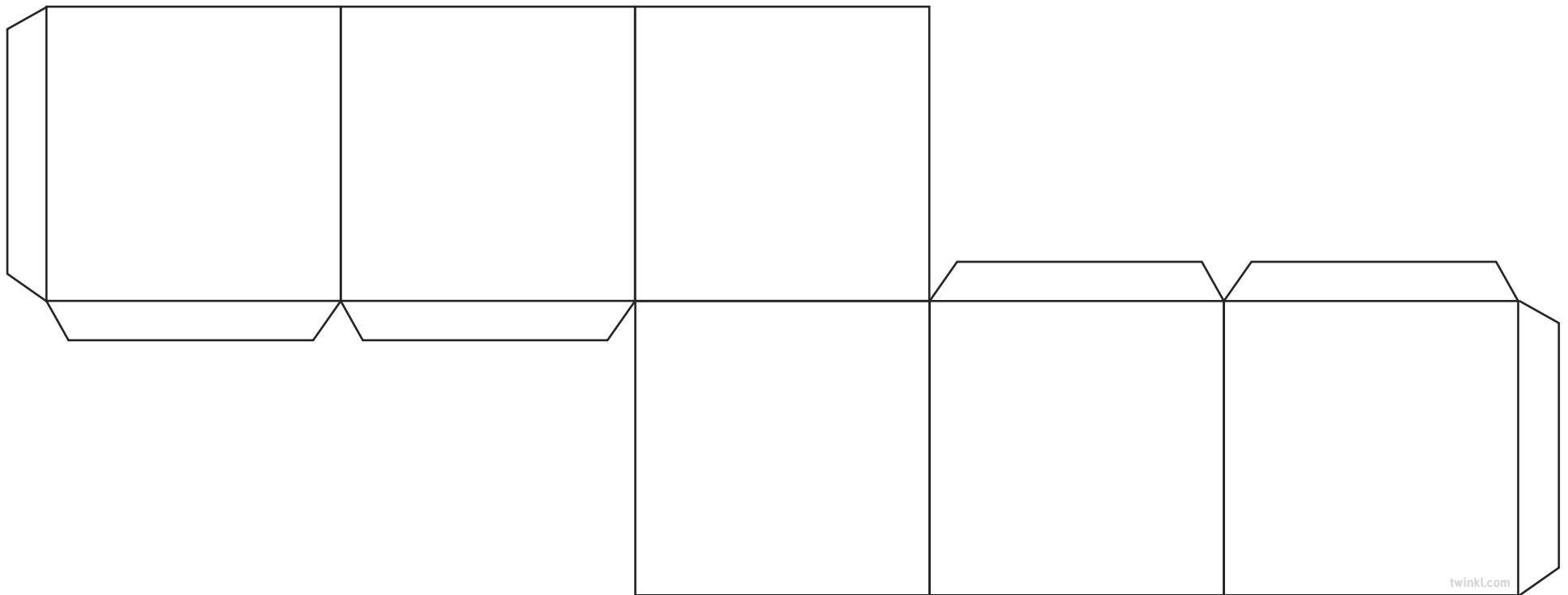
# Net of a Cube

This is a net for a cube. Print it out and then stick it onto thin card. Cut it out and then score along the lines and fold them. Stick together with small amounts of glue.



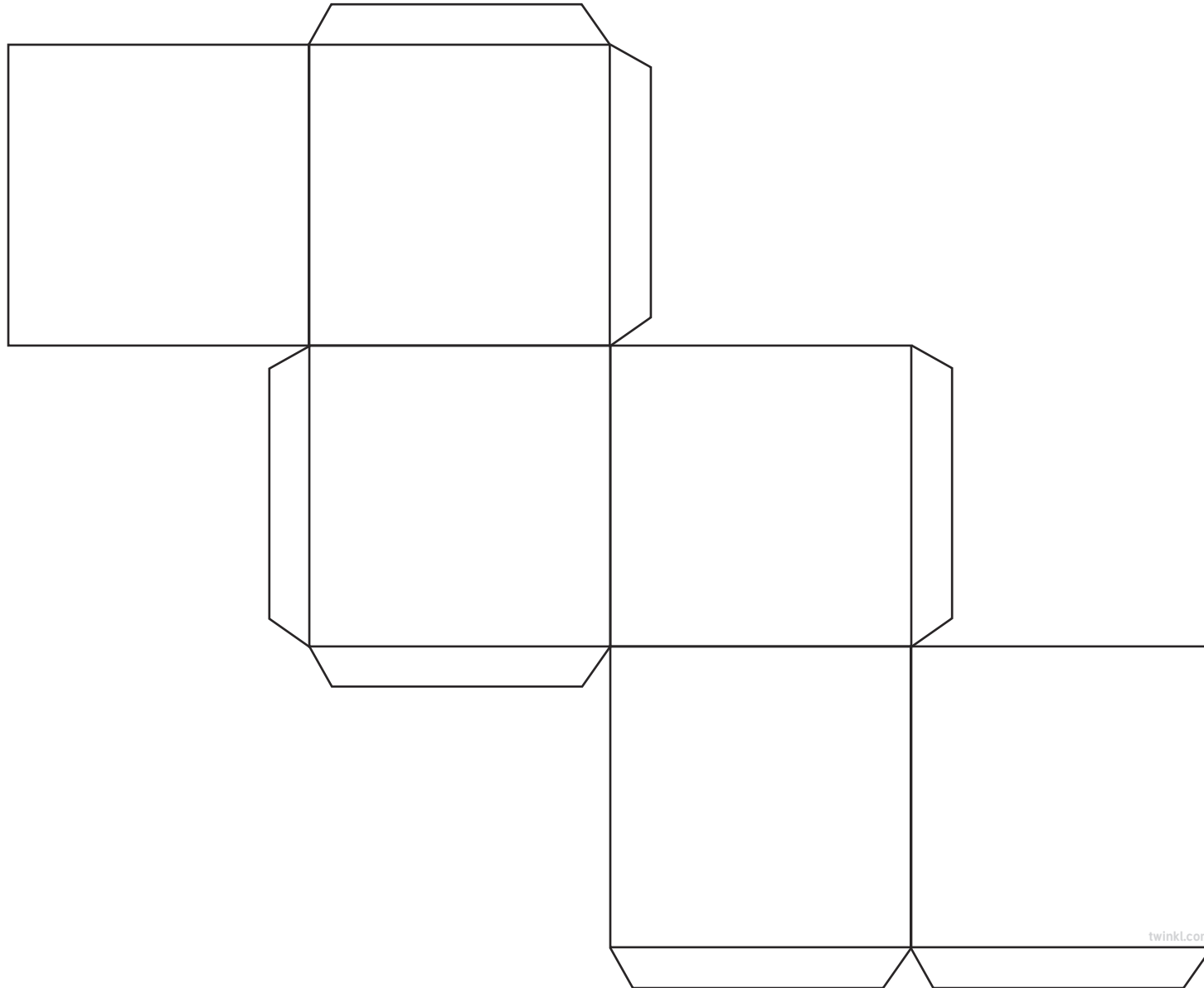
# Net of a Cube

This is a net for a cube. Print it out and then stick it onto thin card. Cut it out and then score along the lines and fold them. Stick together with small amounts of glue.



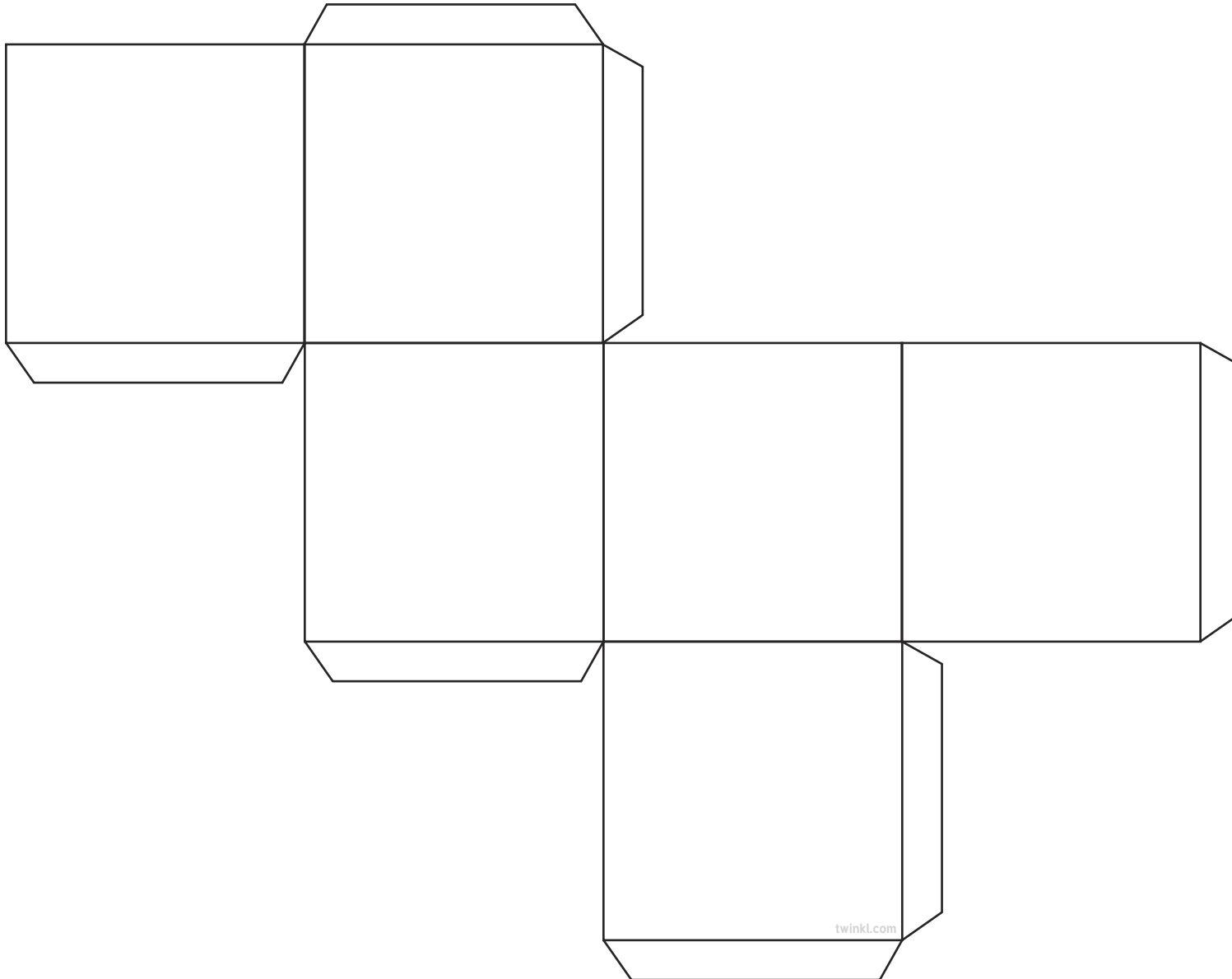
# Net of a Cube

This is a net for a cube. Print it out and then stick it onto thin card. Cut it out and then score along the lines and fold them. Stick together with small amounts of glue.



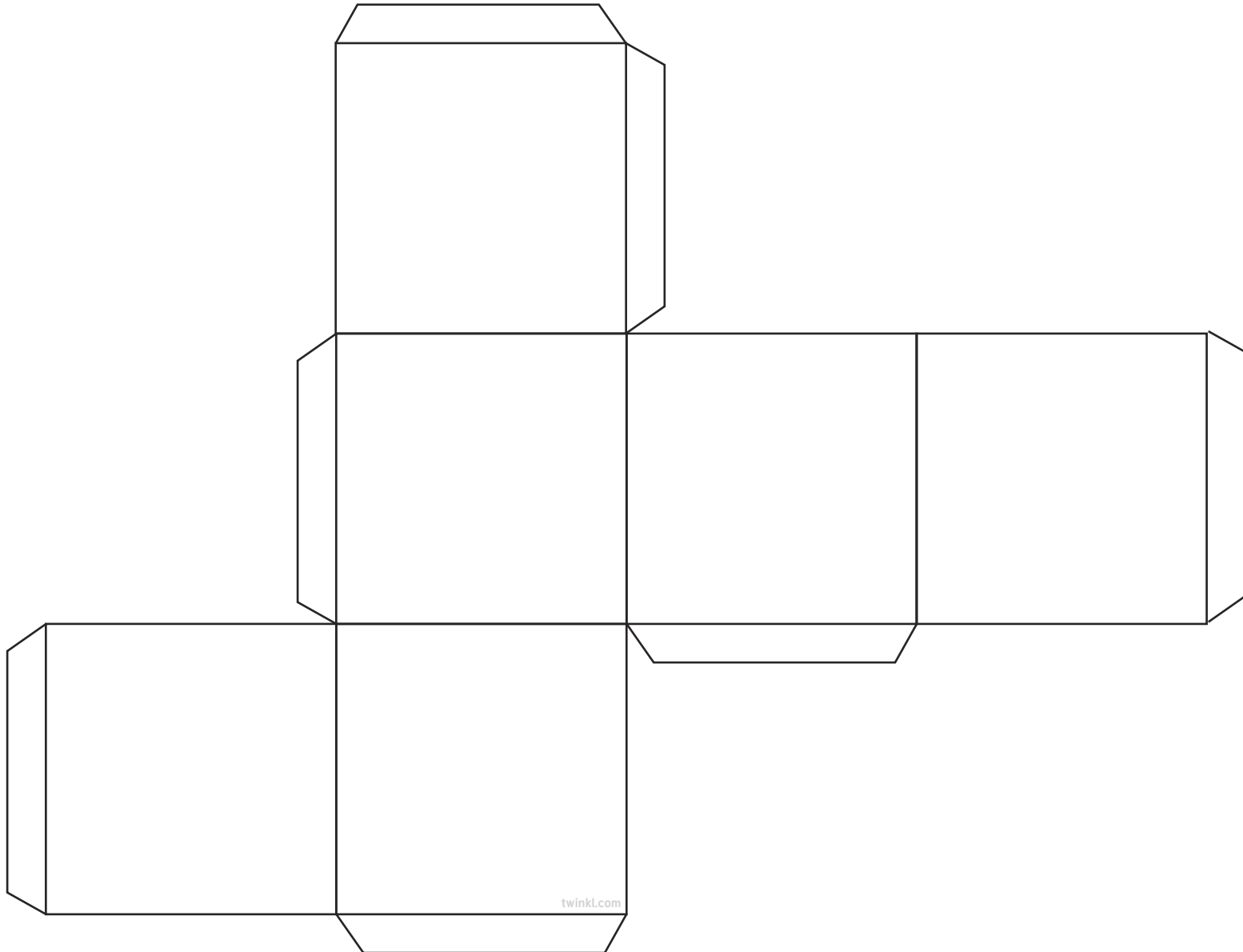
# Net of a Cube

This is a net for a cube. Print it out and then stick it onto thin card. Cut it out and then score along the lines and fold them. Stick together with small amounts of glue.



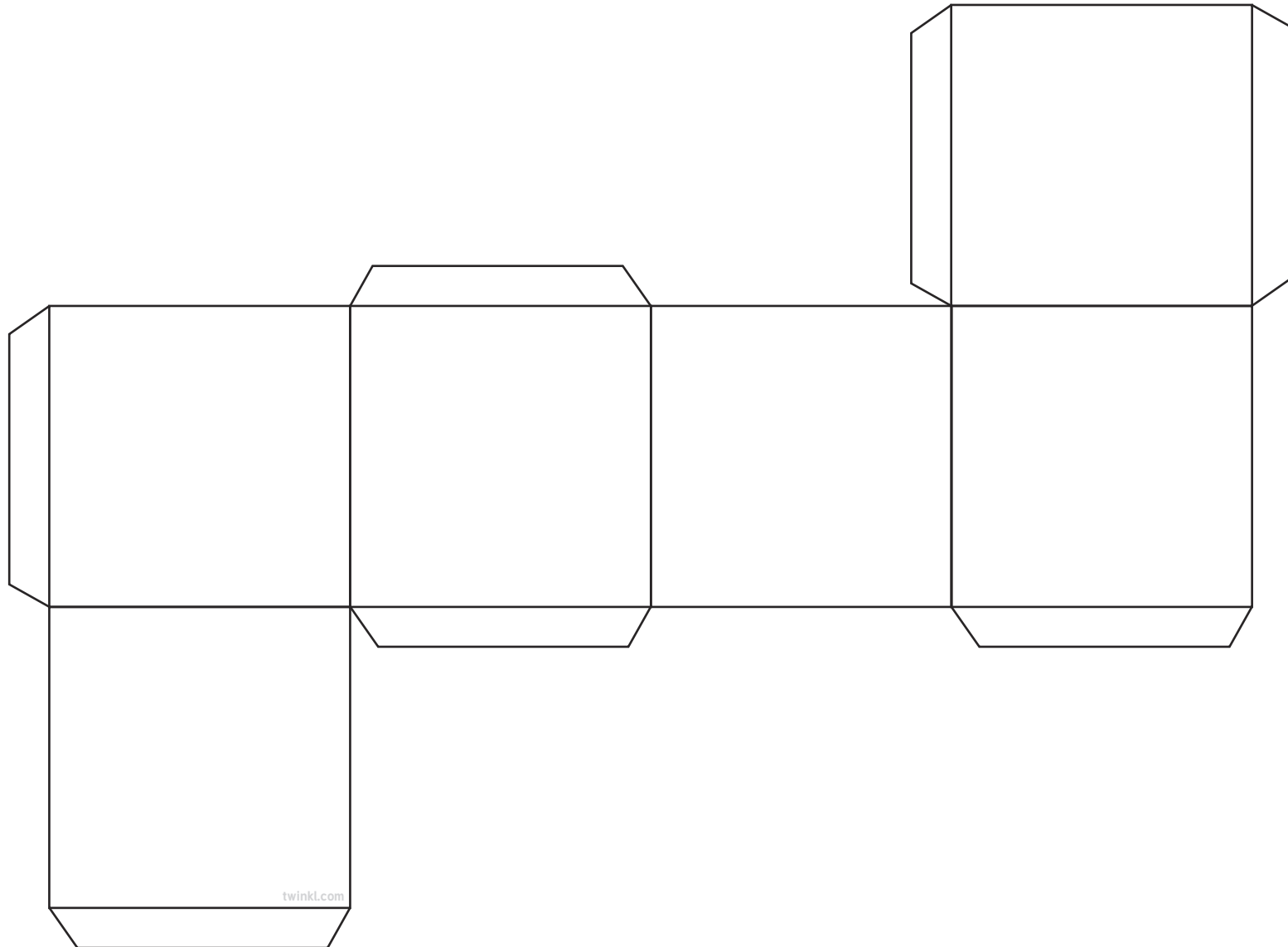
# Net of a Cube

This is a net for a cube. Print it out and then stick it onto thin card. Cut it out and then score along the lines and fold them. Stick together with small amounts of glue.



# Net of a Cube

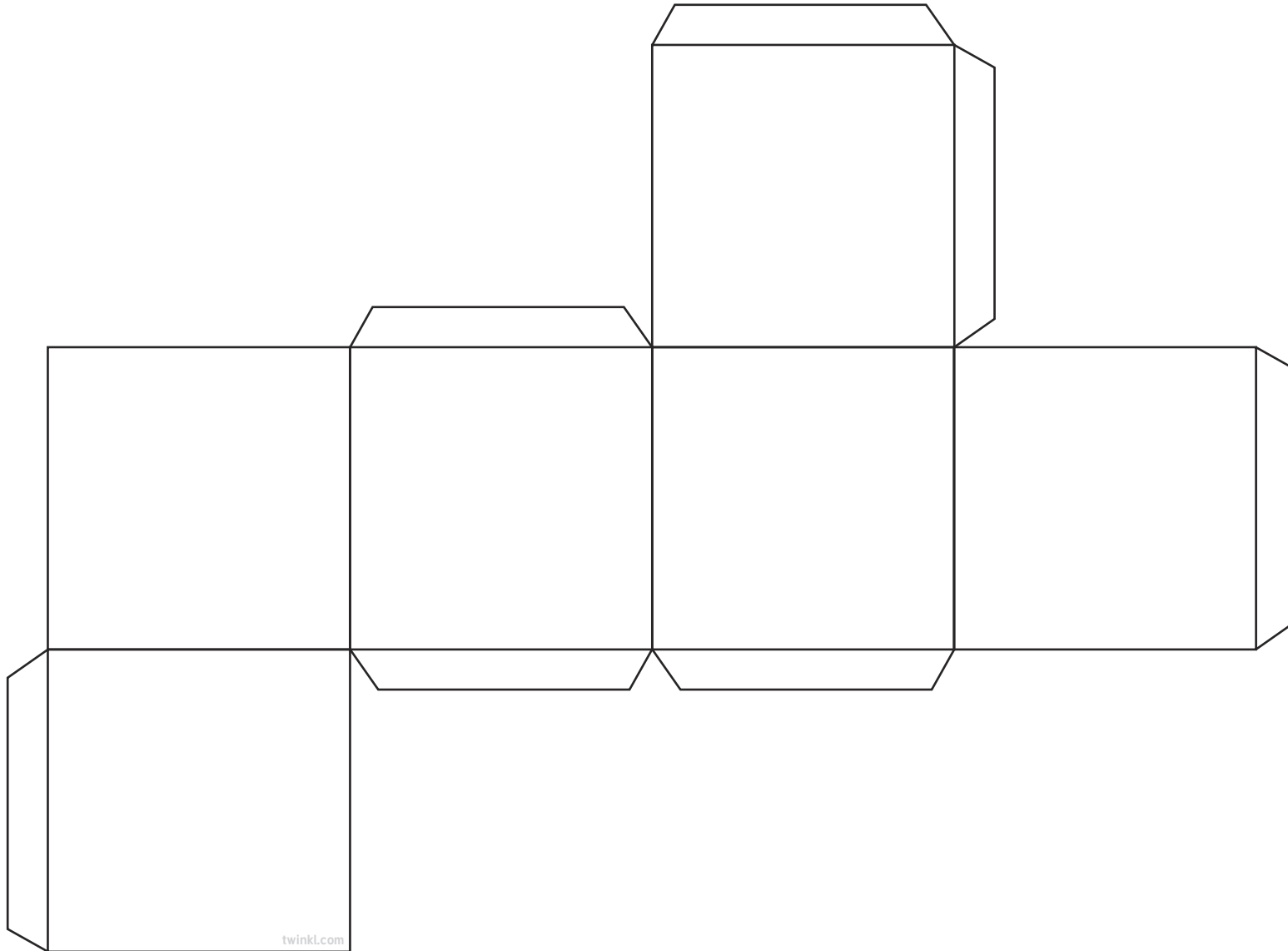
This is a net for a cube. Print it out and then stick it onto thin card. Cut it out and then score along the lines and fold them. Stick together with small amounts of glue.





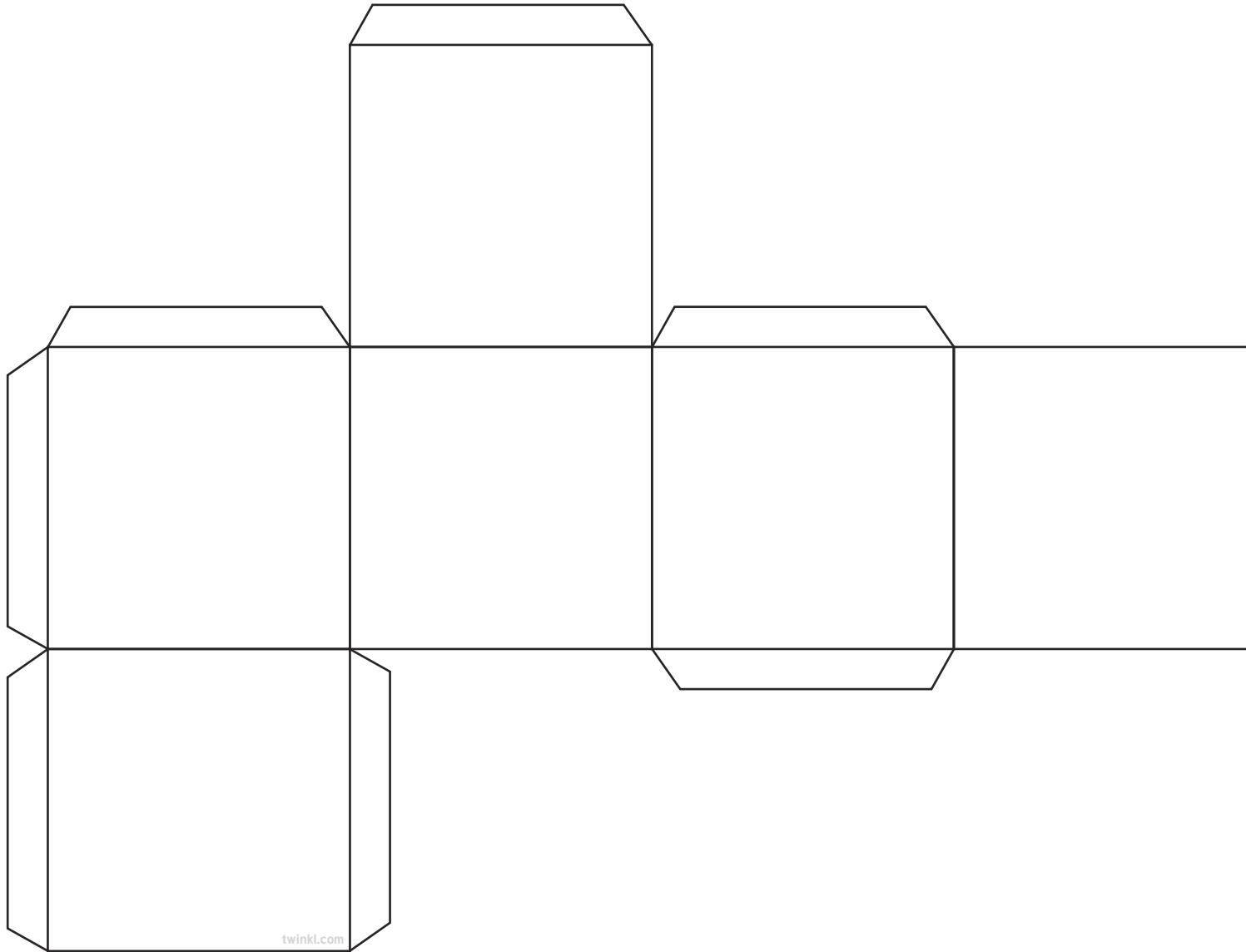
# Net of a Cube

This is a net for a cube. Print it out and then stick it onto thin card. Cut it out and then score along the lines and fold them. Stick together with small amounts of glue.



# Net of a Cube

This is a net for a cube. Print it out and then stick it onto thin card. Cut it out and then score along the lines and fold them. Stick together with small amounts of glue.



# Net of a Cube

This is a net for a cube. Print it out and then stick it onto thin card. Cut it out and then score along the lines and fold them. Stick together with small amounts of glue.

