



Let's go to the Arctic

Today we will be:

Exploring the climate in the
Arctic.

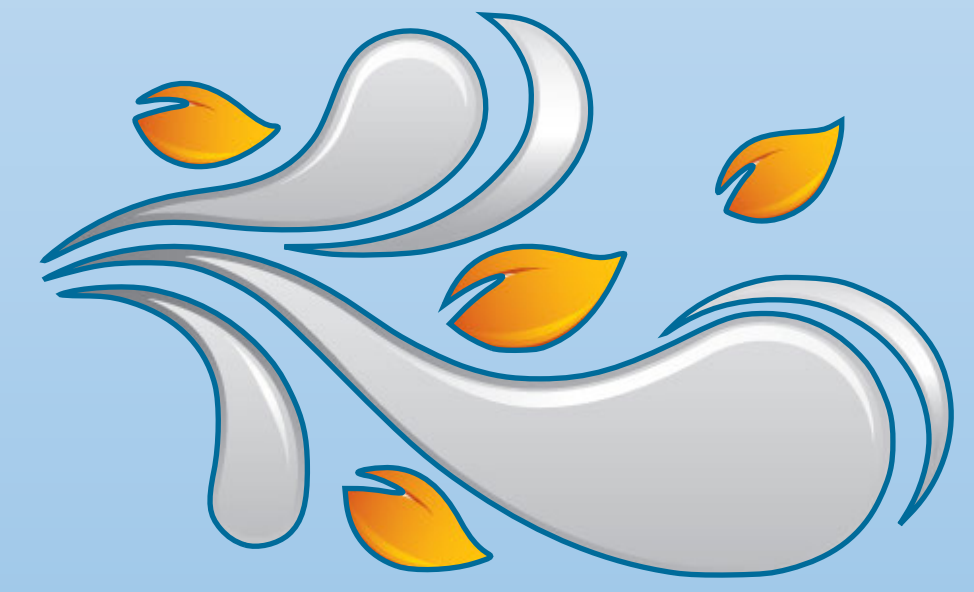
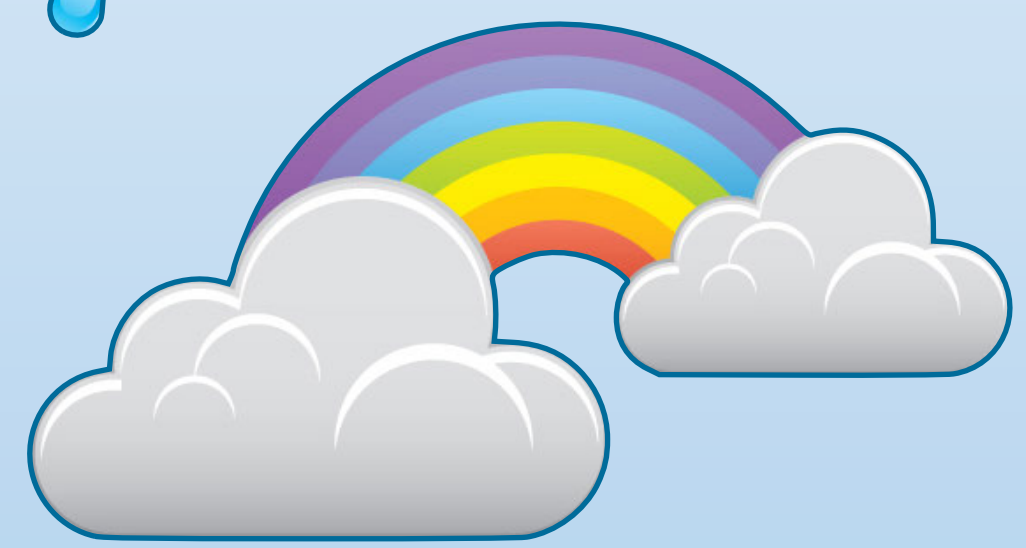
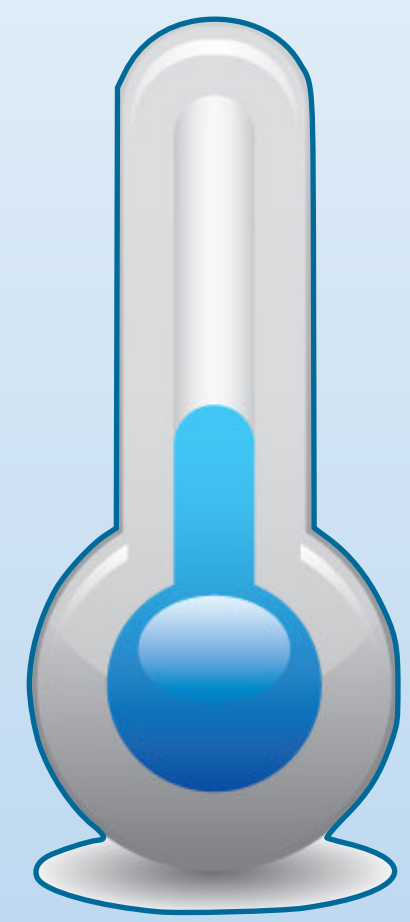
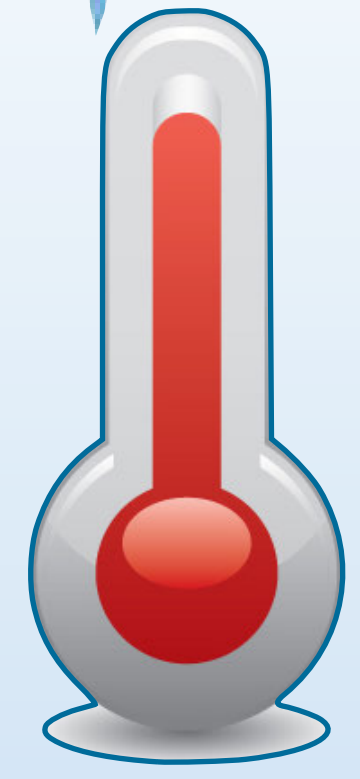
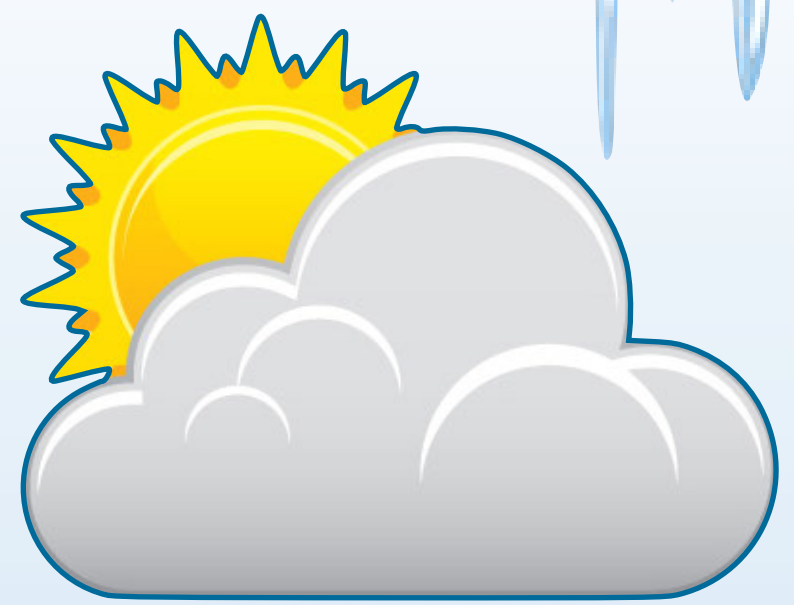
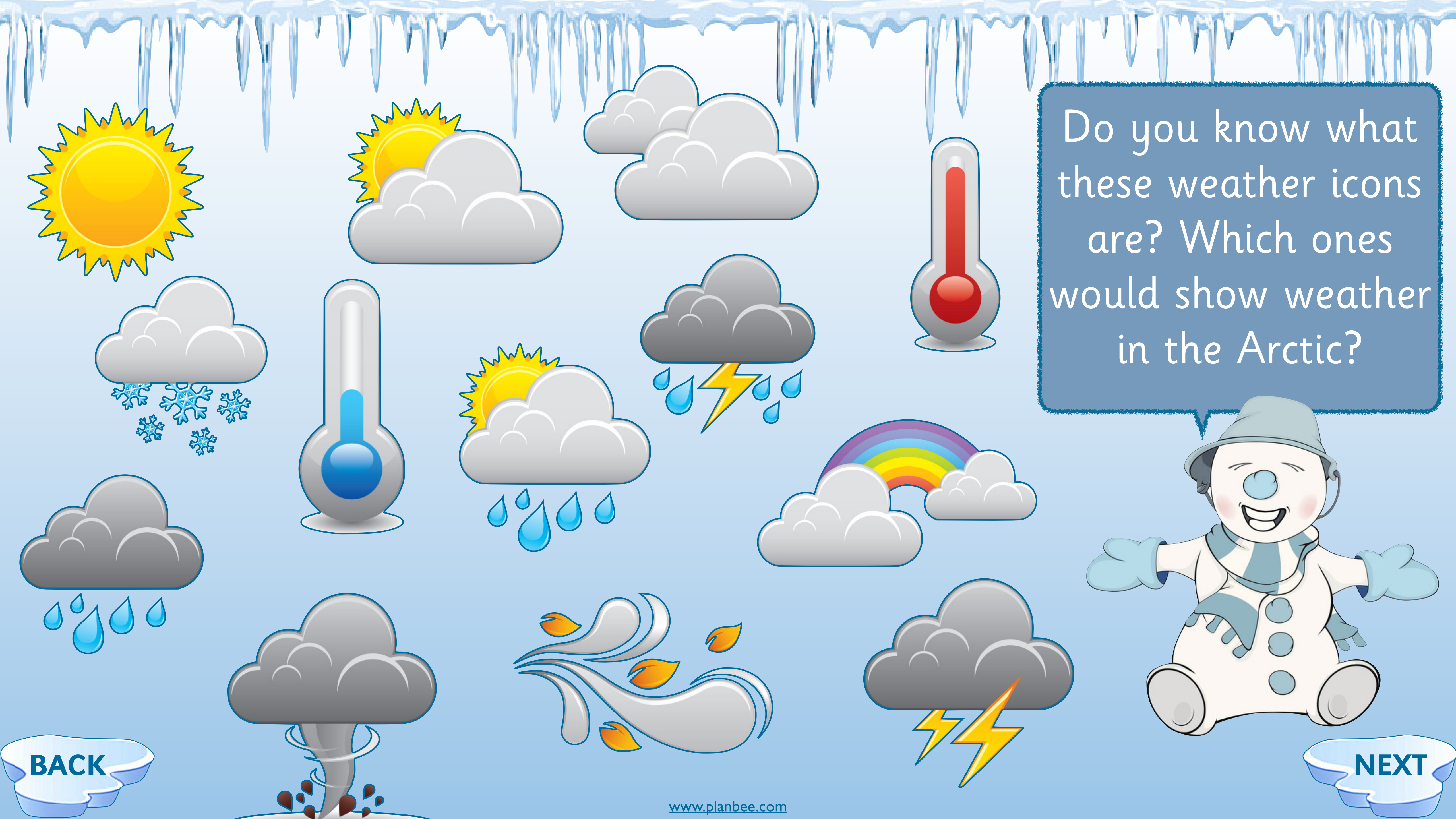


What is the
weather like where
you live? Do you
have seasons?

Think, pair, share

BACK

NEXT



Do you know what these weather icons are? Which ones would show weather in the Arctic?



BACK

NEXT

You would definitely experience these types of weather in the Arctic.
Do you agree? Why?
Think, pair, share.



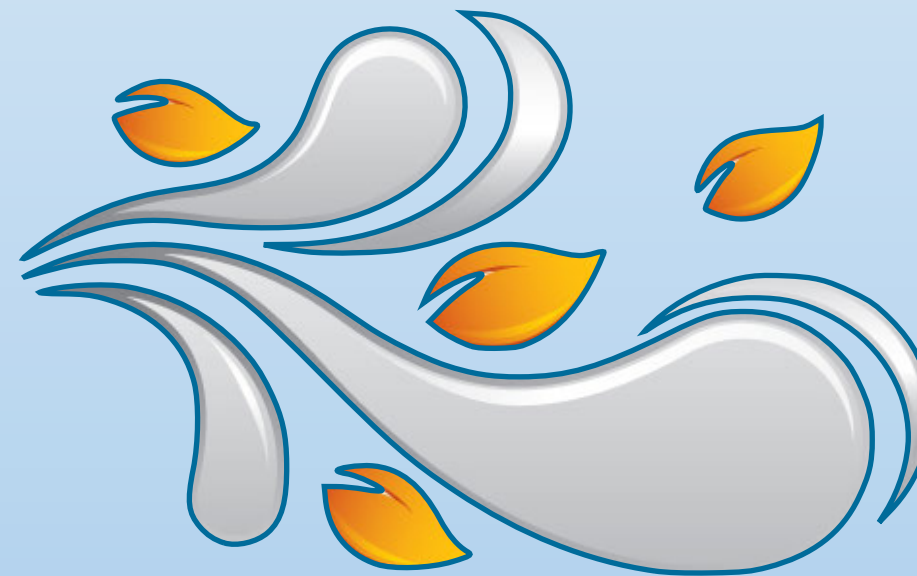
cloudy



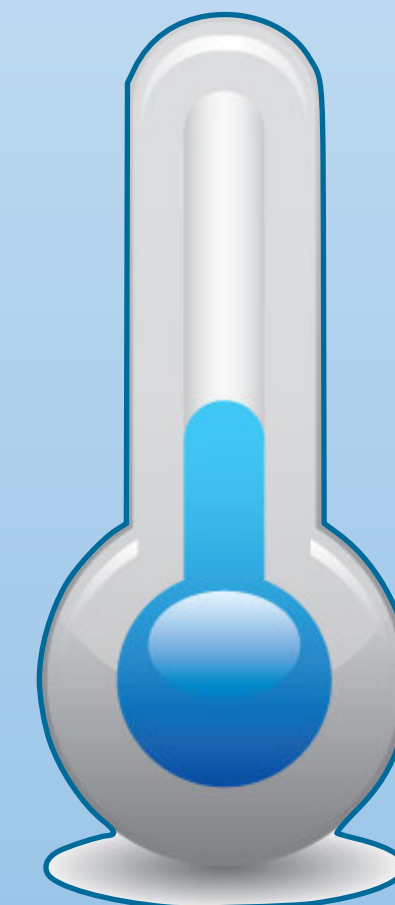
slightly
sunny



snowy



windy



freezing
temperatures

BACK

NEXT

The Arctic has a summer
and a winter season.
Autumn and spring are
very short. The winter
lasts for most of the year.

Let's take a look at what
summer and winter are like
in the Arctic. Do you think
it is similar to where you
live?



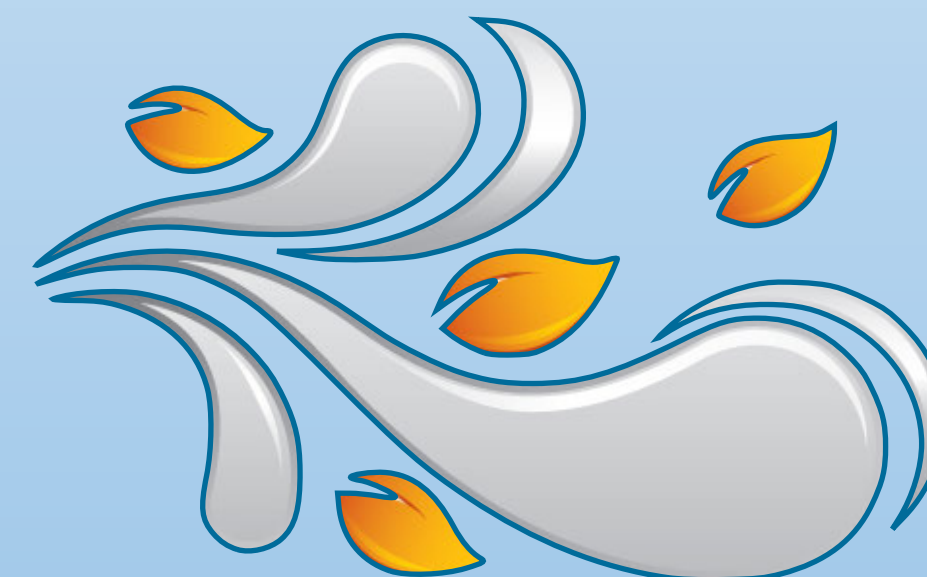
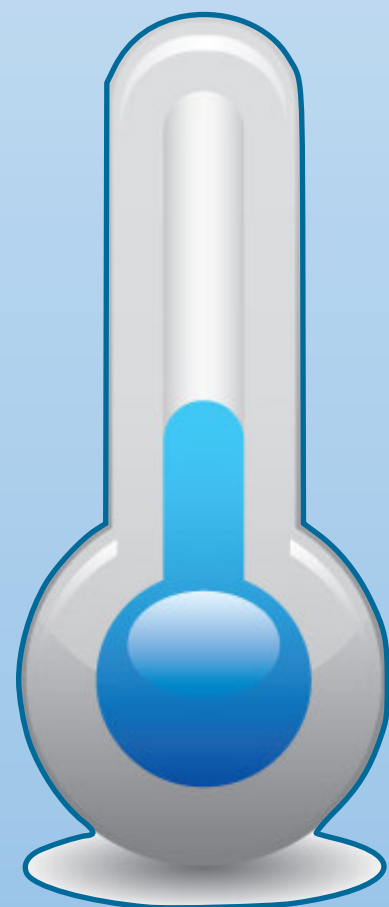
BACK

NEXT

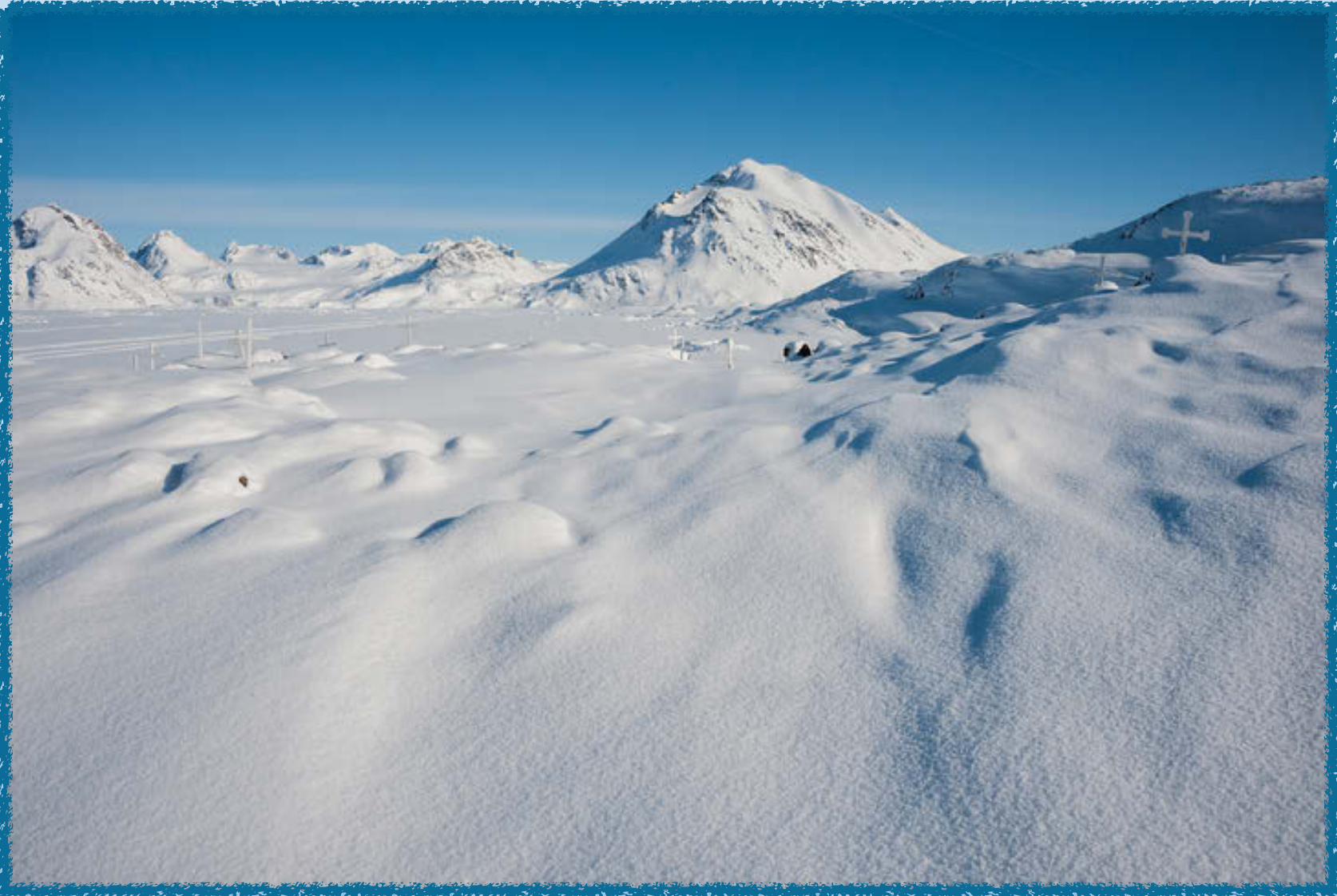
Winter in the Arctic

November	December	January	February	March	April	May
These are the winter months. Winter in the Arctic is very long and cold. Most of the land in the Arctic is covered in ice during this time. Sometimes the sun doesn't rise at all.				These months are the end of winter. The sun begins to rise a little higher in the sky. It is still very cold.		Snow and ice begin to melt at the end of May ready for summer.

How would you feel if you didn't have sunlight for days?



Look at winter in the Arctic. What can you see?



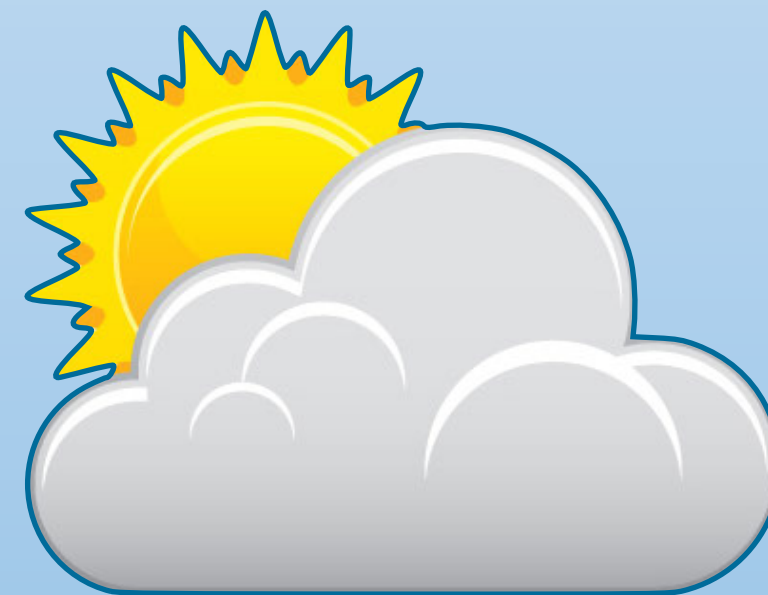
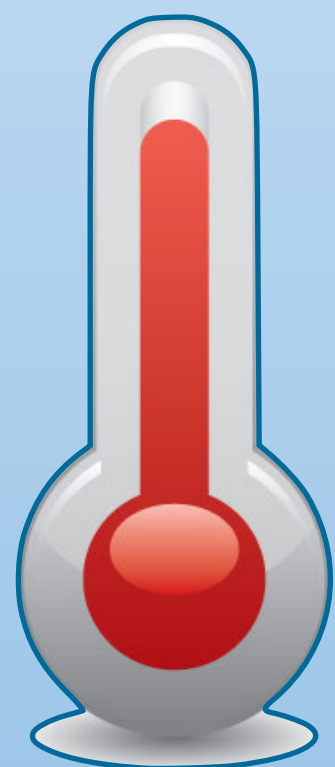
BACK

NEXT

Summer in the Arctic

June	July	August	September	October
These are the summer months in the Arctic. The sun rises higher in the sky. Sometimes the sun doesn't set and it stays light at night time. Most of the snow and ice on the land melts. The temperature is still quite cold.			These months are the end of summer. Days become shorter and the sun begins to disappear. The sea and land begin to freeze and snow storms occur.	

If you lived in the Arctic, what would you do in summer?



BACK

NEXT

Look at summer in the Arctic. What can you see?





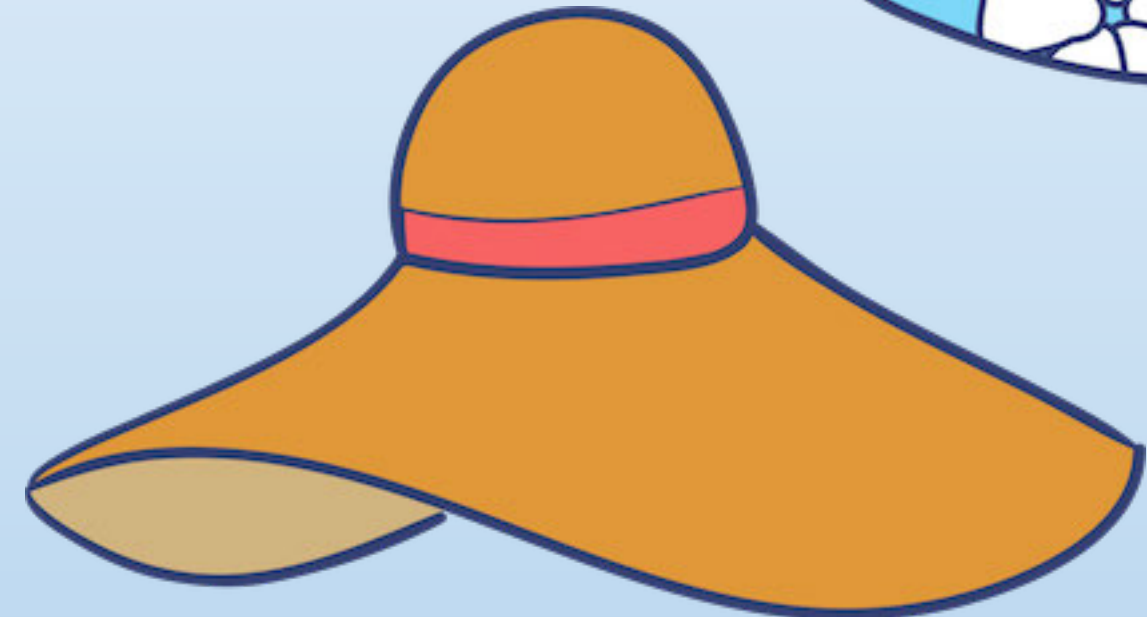
Did you know the Arctic is in a biome known as the tundra? This means it is one of the coldest places in the world. It is a dry place with not much water. The ground is permanently frozen. The land can't support many plants or animal life.

BACK

NEXT

Plenary

Which of these items of clothing would you wear in the Arctic winter?



BACK

NEXT

Plenary

Did you guess
correctly?



BACK

NEXT