



# Let's go to the Arctic

Today we will be:

Exploring the climate in the  
Arctic.



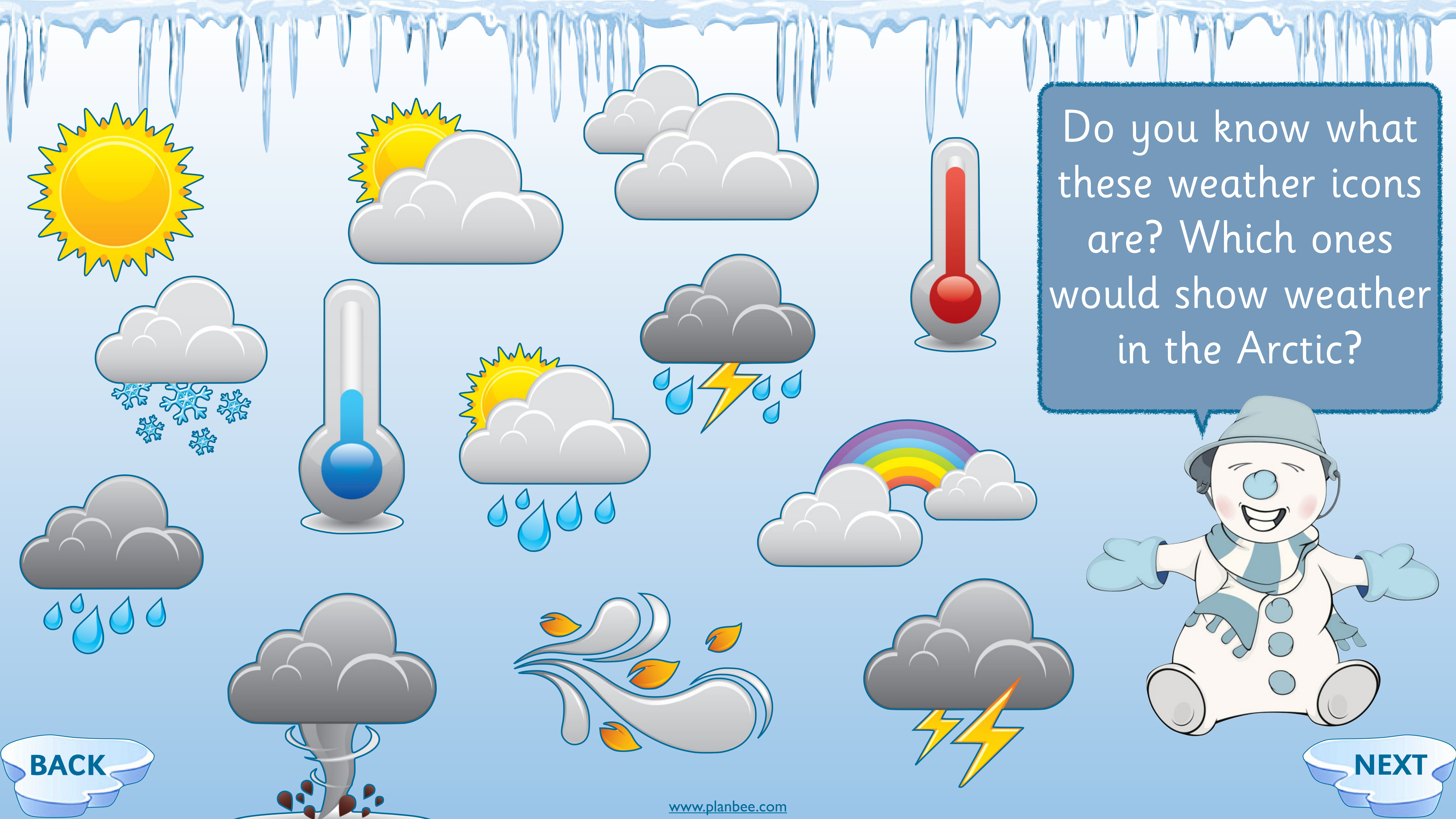
What is the  
weather like where  
you live? Do you  
have seasons?

Think, pair, share

BACK

NEXT





Do you know what these weather icons are? Which ones would show weather in the Arctic?

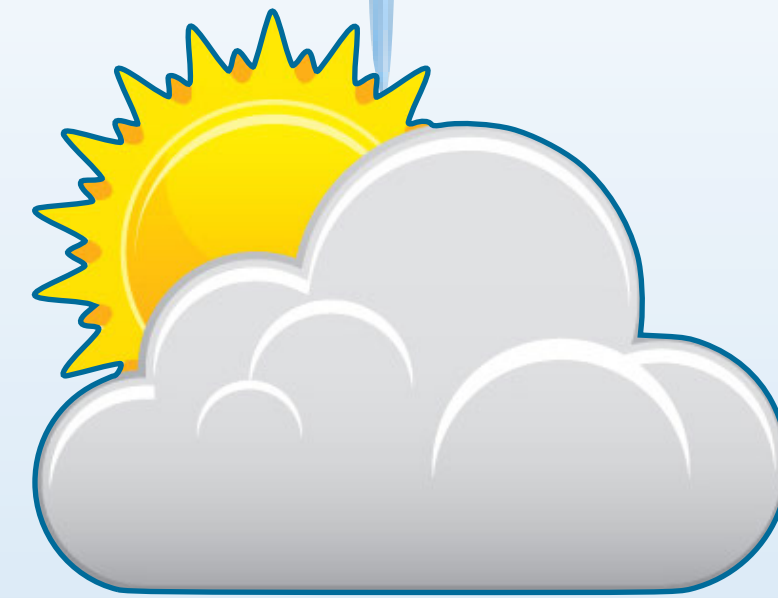




You would definitely experience these types of weather in the Arctic.  
Do you agree? Why?  
**Think, pair, share.**



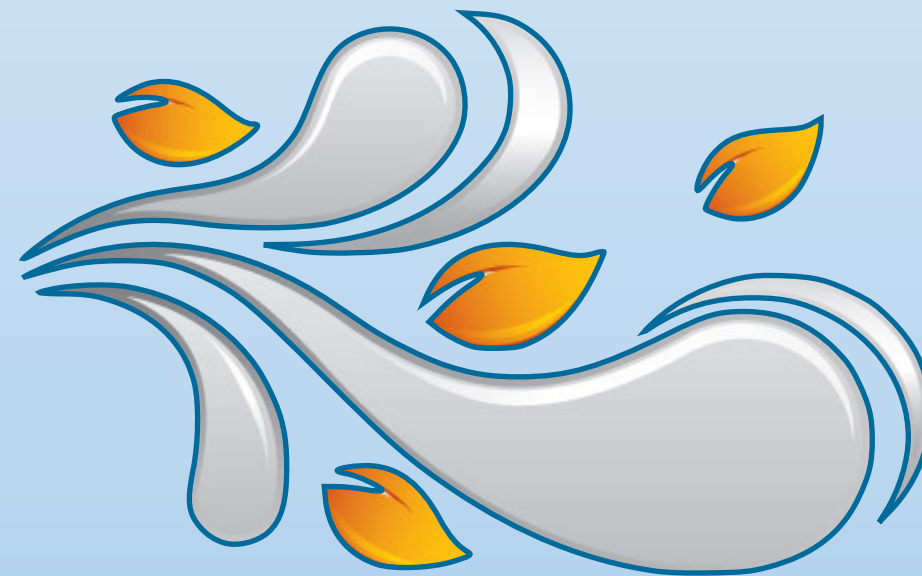
cloudy



slightly  
sunny



snowy



windy



freezing  
temperatures

BACK

NEXT



The Arctic has a summer  
and a winter season.  
Autumn and spring are  
very short. The winter  
lasts for most of the year.

Let's take a look at what  
summer and winter are like  
in the Arctic. Do you think  
it is similar to where you  
live?



BACK

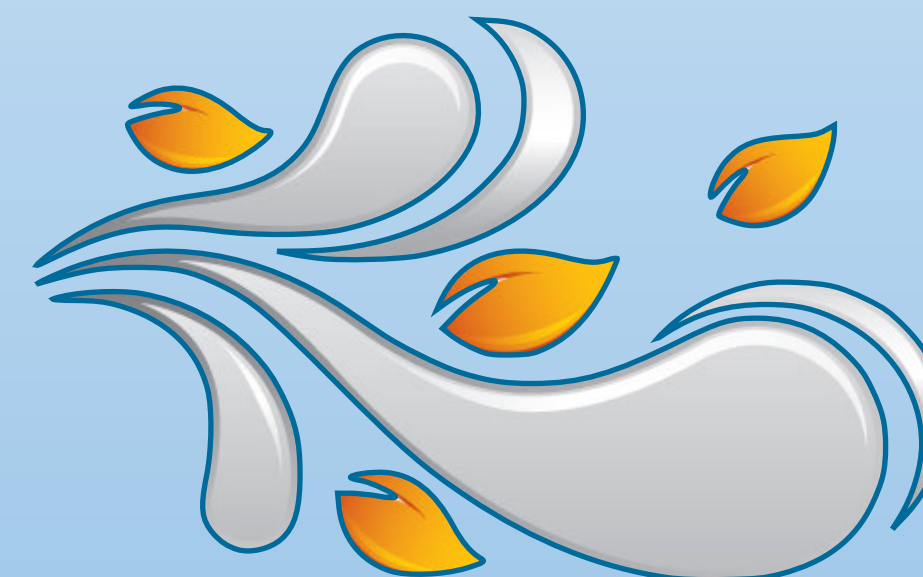
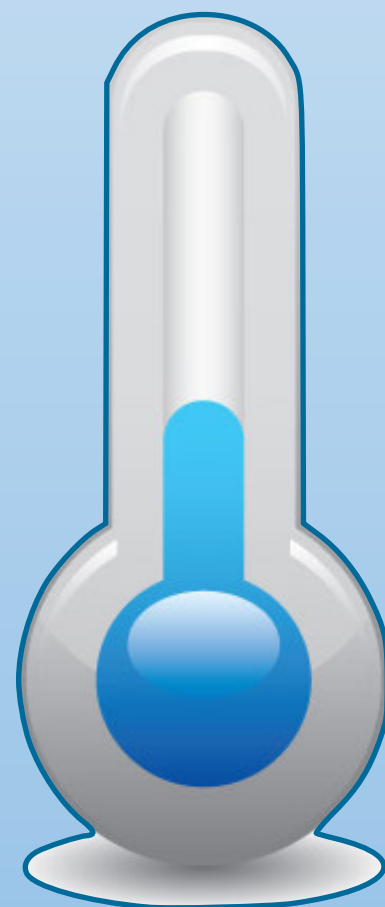
NEXT



# Winter in the Arctic

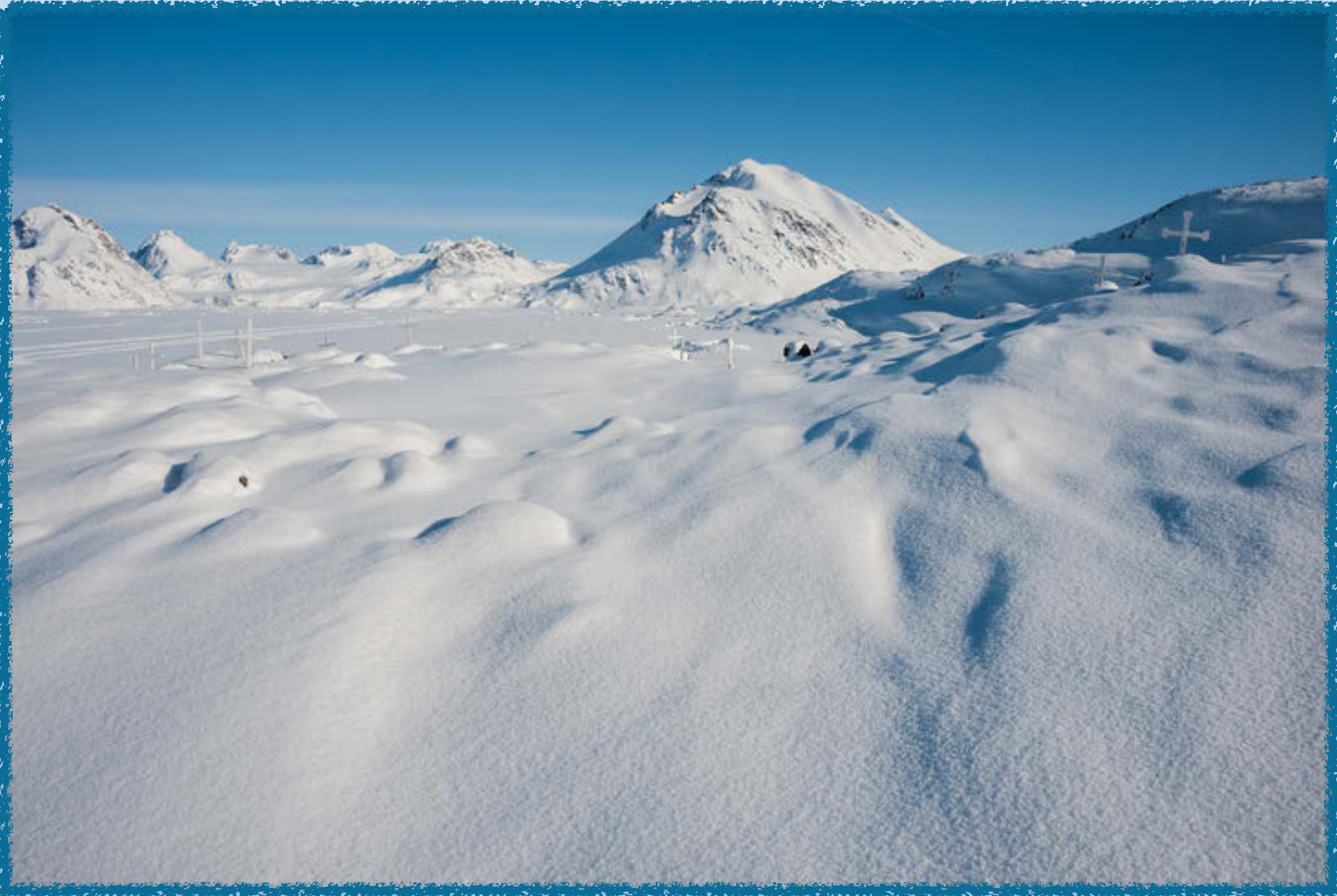
November	December	January	February	March	April	May
These are the winter months. Winter in the Arctic is very long and cold. Most of the land in the Arctic is covered in ice during this time. Sometimes the sun doesn't rise at all.				These months are the end of winter. The sun begins to rise a little higher in the sky. It is still very cold.		Snow and ice begin to melt at the end of May ready for summer.

How would you feel if you didn't have sunlight for days?





Look at winter in the Arctic. What can you see?



BACK

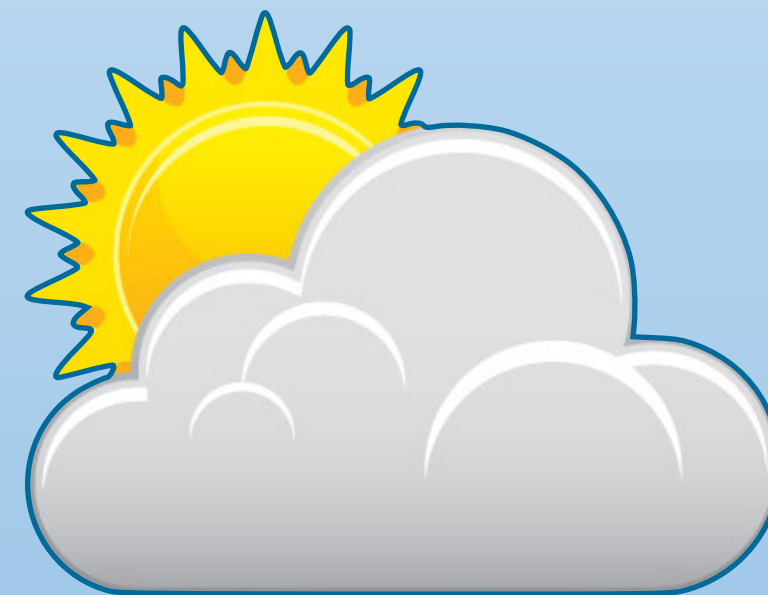
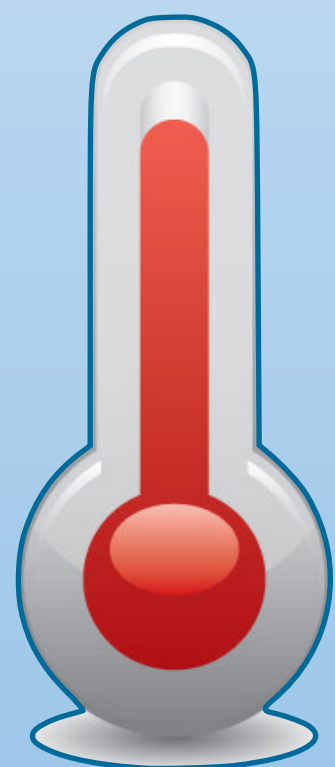
NEXT



# Summer in the Arctic

June	July	August	September	October
These are the summer months in the Arctic. The sun rises higher in the sky. Sometimes the sun doesn't set and it stays light at night time. Most of the snow and ice on the land melts. The temperature is still quite cold.			These months are the end of summer. Days become shorter and the sun begins to disappear. The sea and land begin to freeze and snow storms occur.	

If you lived in the Arctic, what would you do in summer?



BACK

NEXT



# Look at summer in the Arctic. What can you see?



BACK

NEXT





Did you know the Arctic is in a biome known as the tundra? This means it is one of the coldest places in the world. It is a dry place with not much water. The ground is permanently frozen. The land can't support many plants or animal life.

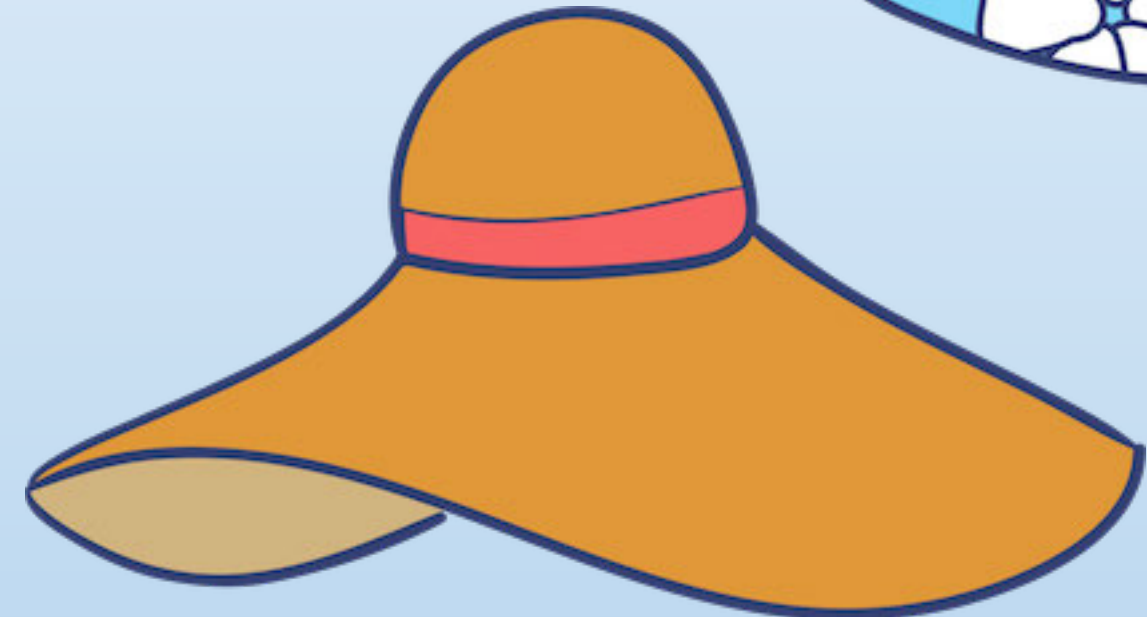
**BACK**

**NEXT**



# Plenary

Which of these items of clothing would you wear in the Arctic winter?



BACK

NEXT



# Plenary

Did you guess correctly?



BACK

NEXT