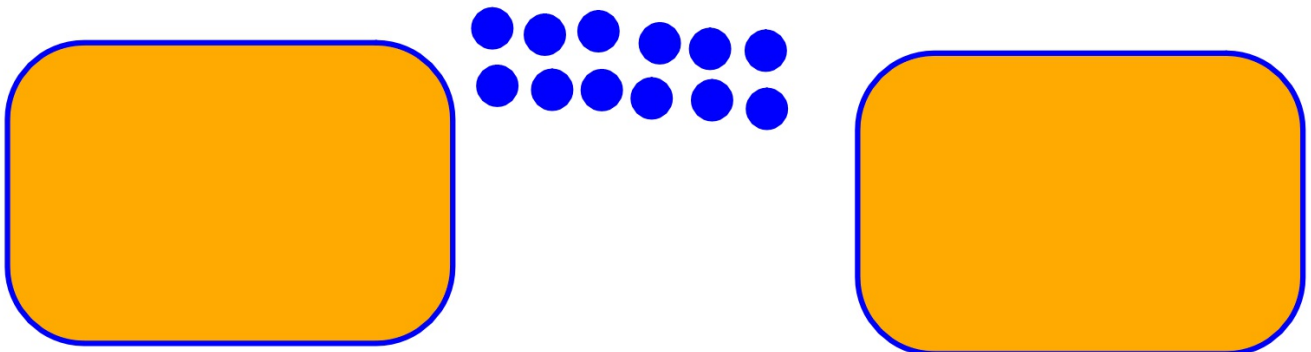


WALT: Divide by sharing

Yesterday we looked at halving numbers by sharing counters equally into 2 groups

Half of 12 is

$$12 \div 2 =$$



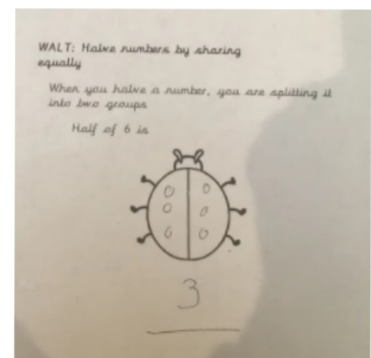
WALT: Divide by sharing

WALT: Halve numbers by sharing equally

Bronze	Silver
Half of 2 is	Half of 12 is 6
Half of 4 is	Half of 8 is 4
Half of 6 is	Half of 14 is 7
Half of 8 is	Half of 16 is 8
Half of 10 is	Half of 20 is 10
Half of 12 is	Half of 4 is 2
Half of 14 is	Half of 24 is 12
Half of 16 is	Half of 18 is 9
Half of 18 is	Half of 26 is 13
Half of 20 is	

Silver

Half of 12 is	6
Half of 8 is	4
Half of 14 is	7
Half of 16 is	8
Half of 20 is	10
Half of 4 is	2
Half of 24 is	12
Half of 18 is	9
Half of 26 is	13



Lots of great halving with pictures of counters and tens and ones blocks

Make sure all groups are equal

WALT: Divide by sharing

I share 15 cubes between 3 boxes.

$$15 \div 3 = \underline{\quad}$$



WALT: Divide by sharing

I share 15 cubes between 5 boxes



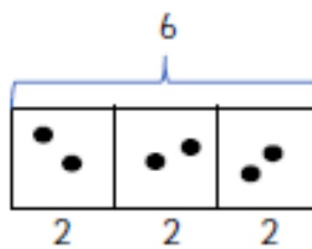
$$15 \div 5 =$$

WALT: Divide by sharing

The bar model shows 6 divided between 3 equal groups.  
The calculation is:  $6 \div 3 = 2$ .

What other number sentences can you create from this?

--



WALT: Divide by sharing

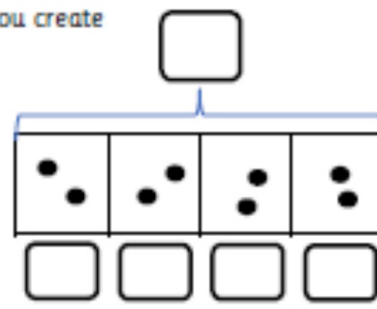
Write a calculation for this problem

I share 24 cubes between 8 boxes.

WALT: Divide by sharing

What multiplication and division number sentences can you create from the bar model?

--



# WALT: Divide by sharing

## Bronze

Solve the calculations using the sharing method.

I share 15 cubes between 3 boxes.

$$15 \div 3 = \underline{\quad}$$



I share 30 apples between 10 boxes.

$$30 \div 10 = \underline{\quad}$$



I share 10 cubes between 2 boxes.

$$10 \div 2 = \underline{\quad}$$



I share 12 apples between 4 boxes.

$$12 \div 4 = \underline{\quad}$$



## Silver

I share 15 cubes between 3 boxes.

$$15 \div 3 = \underline{\quad}$$



I share 10 cubes between 2 boxes.

$$10 \div 2 = \underline{\quad}$$



I share 30 apples between 10 boxes.

$$30 \div 10 = \underline{\quad}$$



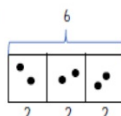
I share 12 apples between 4 boxes.

$$12 \div 4 = \underline{\quad}$$



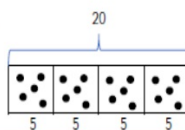
The bar model shows 6 divided between 3 equal groups.  
The calculation is:  $6 \div 3 = 2$ .

What other number sentences can you create from this?



The bar model shows 20 divided between 4 equal groups.  
The calculation is:  $20 \div 4 = 5$ .

What other number sentences can you create from this?



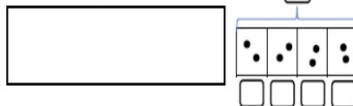
## Gold

Write the calculation sentence represented by the bar model and solve it.

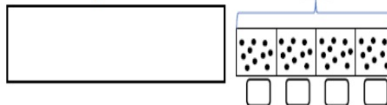
I share 24 cubes between 8 boxes.

I share 28 cubes between 7 boxes.

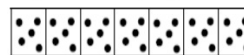
What multiplication and division number sentences can you create from the bar model?



What multiplication and division number sentences can you create from the bar model?



Write a multiplication and division word problem for the bar model shown.



Multiplication word problem:

Division word problem: