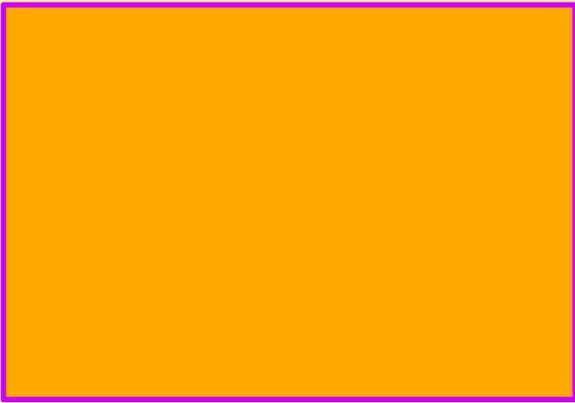


Friday 15th January 2021

WALT: write a character description

What is alliteration?



Why do we use
them in our
writing?

What is a simile?



Friday 15th January 2021

WALT: write a character description

Which are similes and which are alliteration?
How do you know?

He was as angry as a grizzly bear.

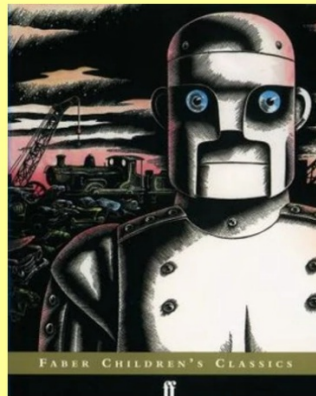
He wears big, black boots.

She has rosy red cheeks.

She is graceful like a swan when she dances.

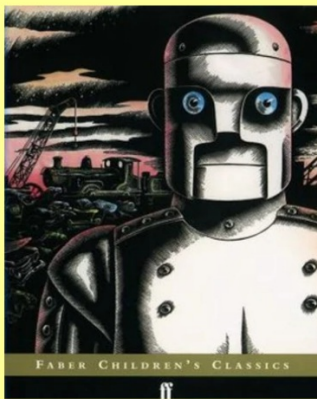
He has bouncy, bold, blonde hair.

Can you complete these similes about the Iron Man?



1. The Iron Man is as big as...
2. His eyes are like...
3. His fingers are as long as...
4. He is shiny like...
5. He is as hard as...

Can we write our own similes and alliterative sentences about the Iron Man?



The Iron Man is an enormous, metal figure who is taller than a house and wider than a river. His great iron head is shaped like a dustbin and it is as big as a bedroom. He has shiny, metallic ears which sway this way and that like the wind. The Iron Man has vibrant eyes like headlamps, which glow white, red and infra-red. He has two giant iron feet which can crush things into nothingness.

Friday 15th January 2021

WALT: write a character description

Gold

- Write a full character description of the Iron Man (as a paragraph).
- Remember to include similes, alliteration and powerful adjectives.

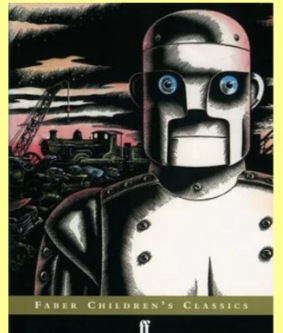


Silver

- Write some sentences using similes to describe the iron man.
- Can you include some alliteration?

Bronze

- Use the sheet and complete the similes.

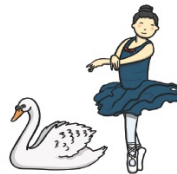


Similes

Similes say something **is like** something else.



Grandad is wise
like an owl.



She is as graceful
as a swan.

Alliteration

Words used together that begin with the same sound.



The **Wicked Witch**
of the **West**



Isaac's **ice-cream**
was **icy**.