

Yesterday, we were learning about dividing by 5

5a. Divide the 40 buckets into groups of 5 and complete the number sentence.



★ $\square \div 5 = \square$

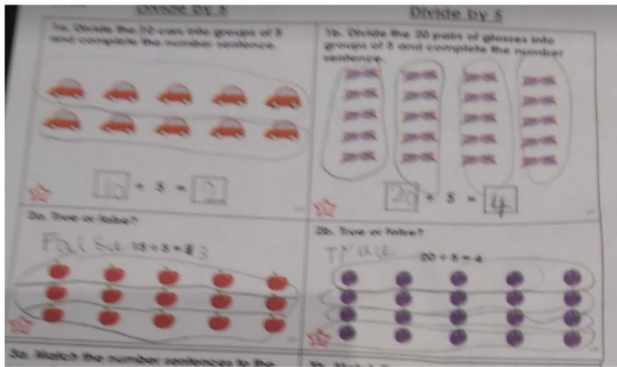
2a. True or false?

$$15 \div 5 = 2$$



VF

VF



Excellent grouping in 5s
to find true or false

Dividing by 2, 5 and 10

4a. 50 stickers are shared equally between 5 people.

Kris: I think they will get 10 stickers each.

Dee: I think they will get 9 stickers each.

kris is correct because $50 / 5 = 10$

Who is correct? Explain why using a division picture to prove it.

5a. Cara wants to share her money between her 5 friends. How much will they each get?


5

Explain your answer.

$25 / 5 = 5$

Great reasoning
using division

WALT: Divide by 2, 5 and 10

 <u>Almondsbury Primary School</u> <u>Maths Attack 2,5 and 10 tables</u>			7
$1 \times 10 =$	$20 \div 5 =$	$70 \div 10 =$	$1 \times 10 =$
$2 \times 4 =$	$120 \div 10 =$	$10 \div 2 =$	$2 \times 4 =$
$5 \times 7 =$	$30 \div 5 =$	$10 \times 0 =$	$5 \times 7 =$
$10 \times 9 =$	$10 \times = 60$	$7 \times 10 =$	$10 \times 9 =$
$7 \times 2 =$	$2 \times = 16$	$5 \times 5 =$	$7 \times 2 =$

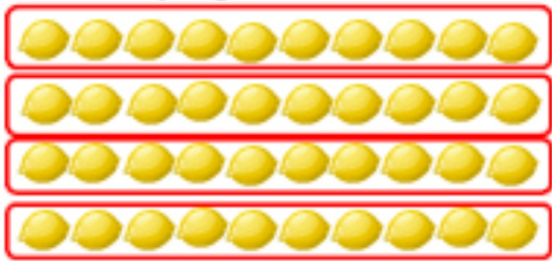
When we do Maths Attack, we have division questions.

We do not have time to draw pictures into groups.

How can we work out these questions quicker?

WALT: Divide by 2, 5 and 10

Dividing by 10



$$40 \div 10 = \square$$

$$30 \div 10 =$$

$$50 \div 10 =$$

$$80 \div 10 =$$

$$40 \div 10 =$$

$$100 \div 10 =$$

$$110 \div 10 =$$

10

20

30

40

50

60

70

80

90

100

110

120

WALT: Divide by 2, 5 and 10

Dividing by 5



$$\boxed{35} \div 5 = \boxed{}$$

$$35 \div 5 =$$

$$20 \div 5 =$$

$$10 \div 5 =$$

$$25 \div 5 =$$

$$45 \div 5 =$$

5
10
15
20
25
30
35
40
45
50
55
60

WALT: Divide by 2, 5 and 10

Dividing by 2



$$22 \div 2 =$$

$$22 \div 2 =$$

$$6 \div 2 =$$

$$10 \div 2 =$$

$$16 \div 2 =$$

$$20 \div 2 =$$

2

4

6

8

10

12

14

16

18

20

22

24

WALT: Divide by 2, 5 and 10

Dividing by the same number

$$2 \div 2 =$$

$$5 \div 5 =$$

$$10 \div 10 =$$

