



Let's go to the Arctic

Today we will be:
Exploring the Arctic's physical
features.

What have you
learnt about the
Arctic so far?



Close your eyes.
Imagine you are in the
Arctic.
What can you see, hear,
smell, taste and feel?
What does the land look
like?

BACK

NEXT

Do you know what
physical features are?
What physical features
would you see in the
Arctic?



BACK

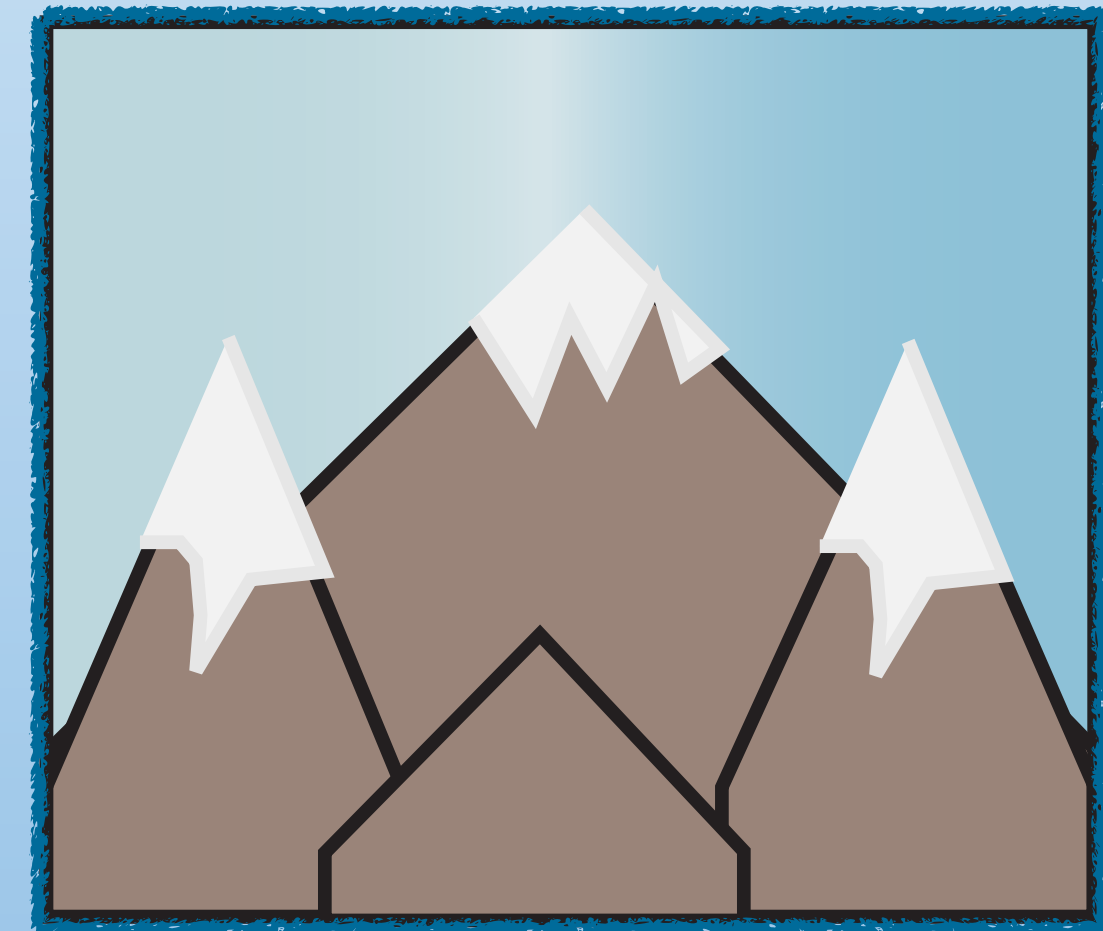
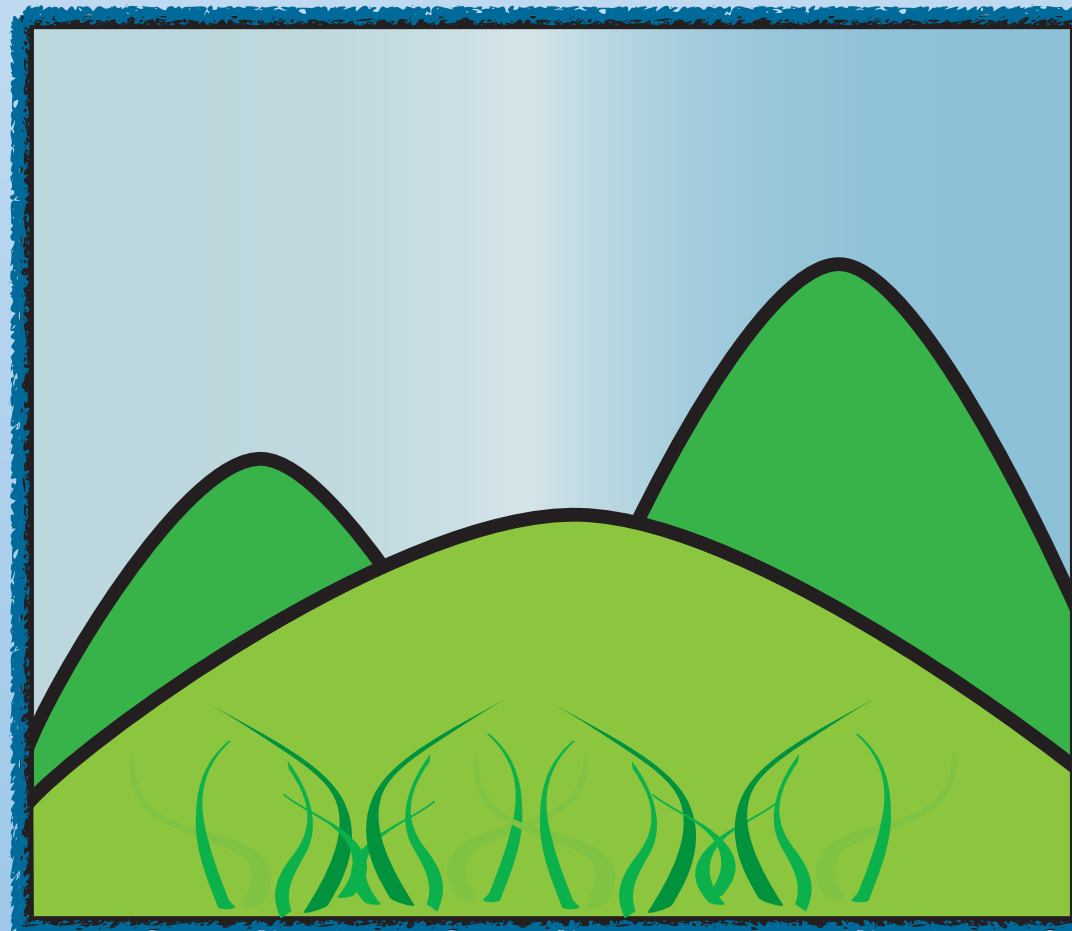
NEXT

What are these?
They are physical
features found in the
Arctic.



That's correct,
they are
MOUNTAINS
and **HILLS**.

Mountains and hills are found in the Arctic. They are usually covered in snow and ice. In the summer you can see grass and small shrubs on the hills.



BACK

NEXT

What are these?
They are physical features
found in the Arctic.



BACK

NEXT

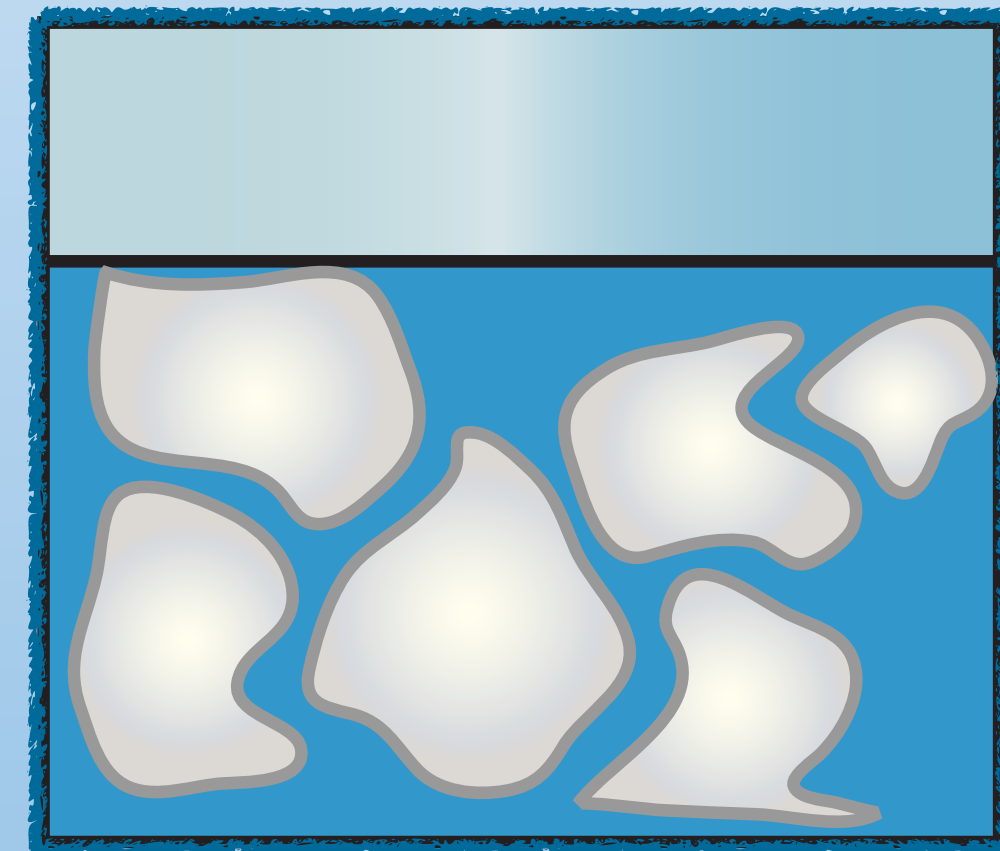
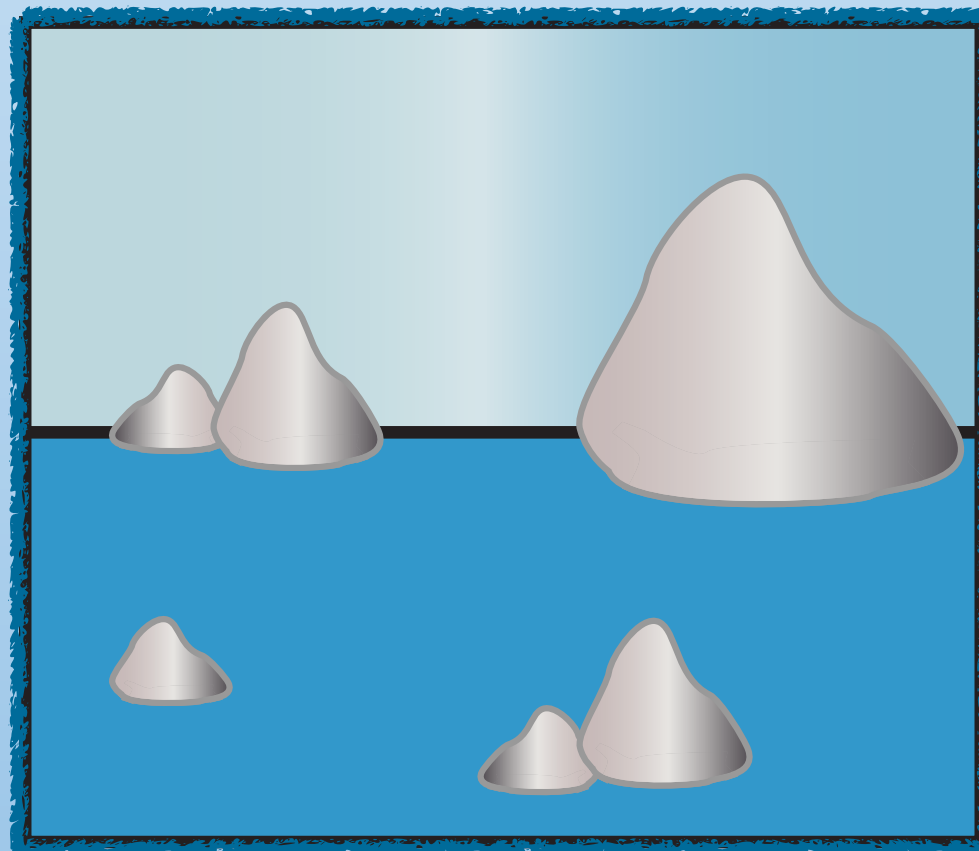
That's correct,
they are
ICEBERGS and
SEA ICE.



BACK

Icebergs are large floating blocks
of ice that break off from a
glacier.

Sea ice is frozen ocean water. The
ice sheet breaks up in the summer.



NEXT

What is this?
It is a physical feature
found in the Arctic.



BACK

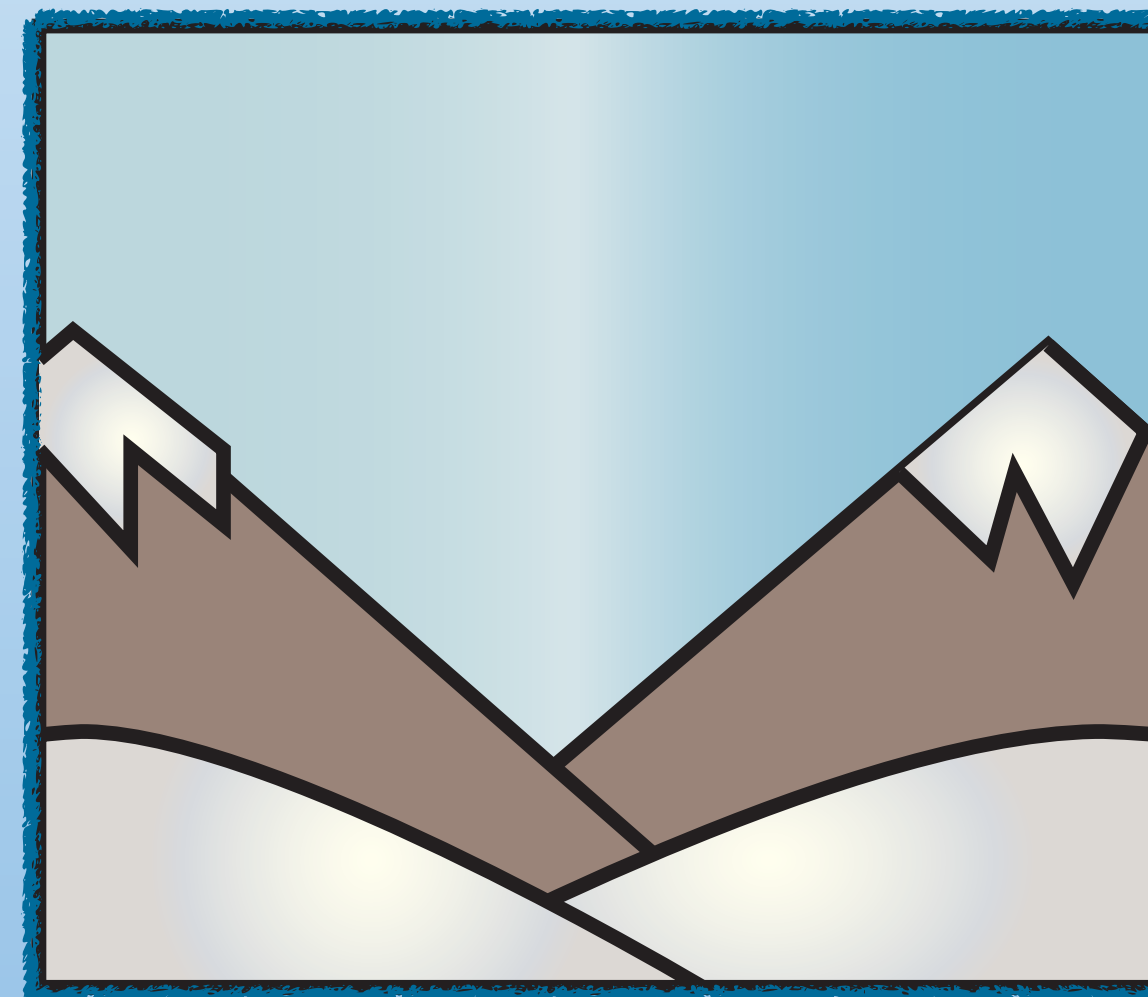
NEXT

That's correct!
It is a
GLACIER.

A glacier is a huge river of ice that moves very slowly. It is made up of snow, ice and rocks. It starts on land and moves towards the water.



BACK



NEXT

What are these?
They are physical
features found in the
Arctic.



BACK

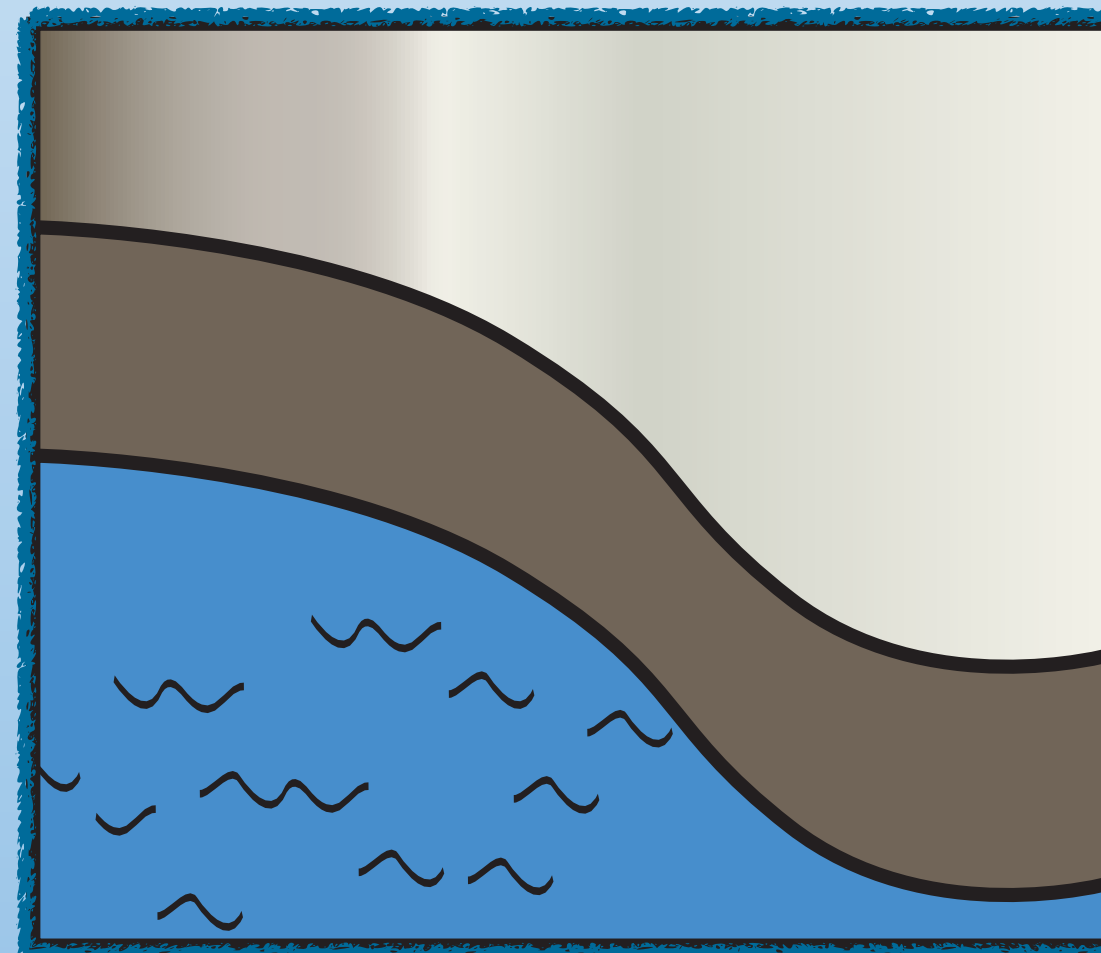
NEXT

That's correct!
They are
OCEANS and
COASTLINES.

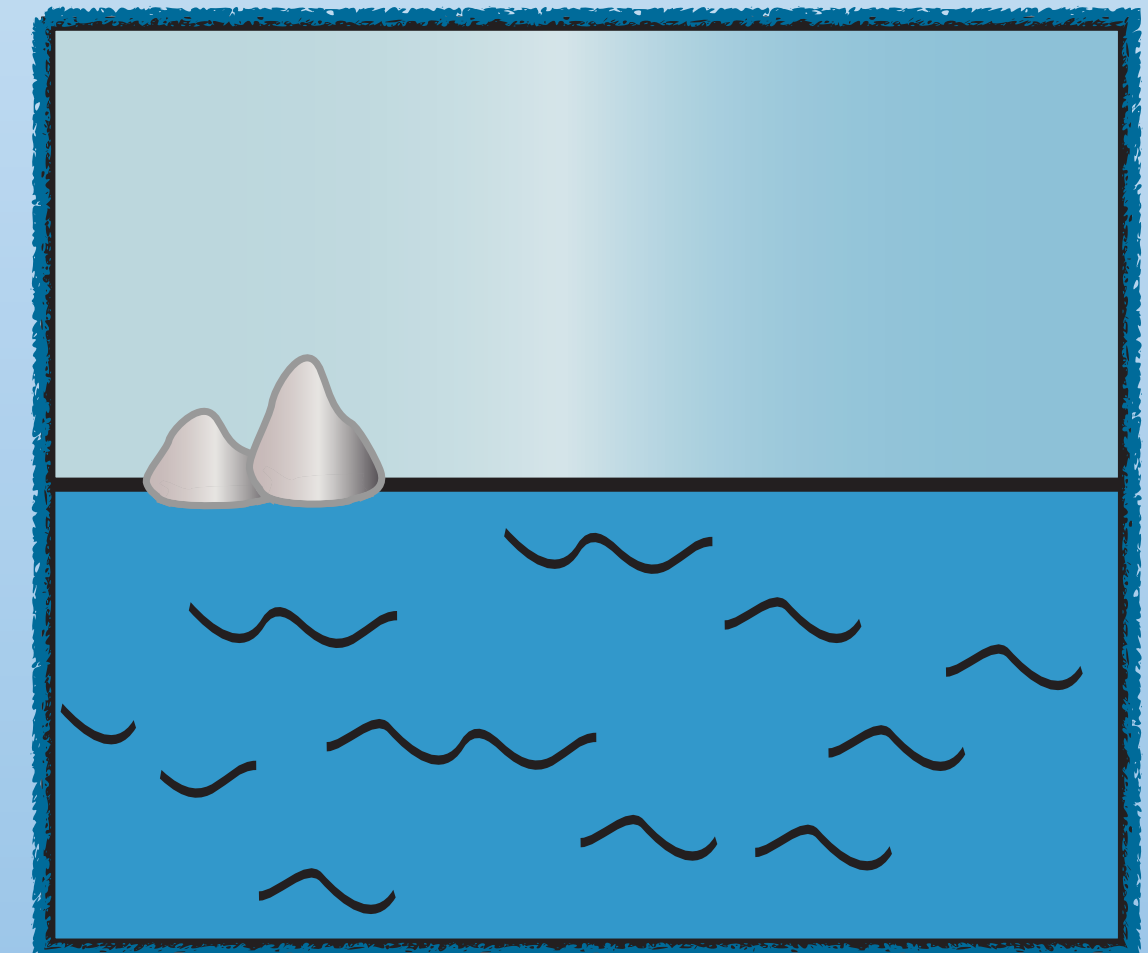
The Arctic Ocean surrounds the
countries in the Arctic Circle. It is the
smallest ocean in the world. A
coastline separates the land from the
ocean.



BACK



www.planbee.com



NEXT

What are these?
They are physical
features found in the
Arctic.



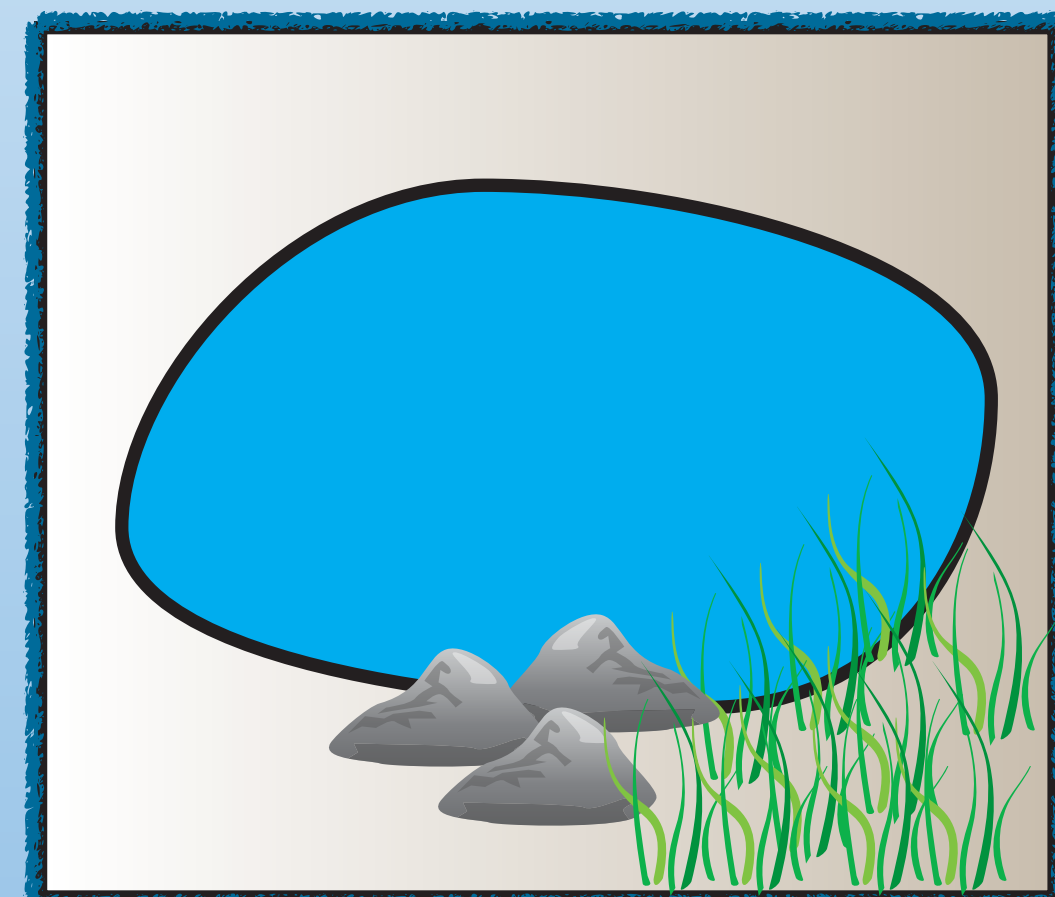
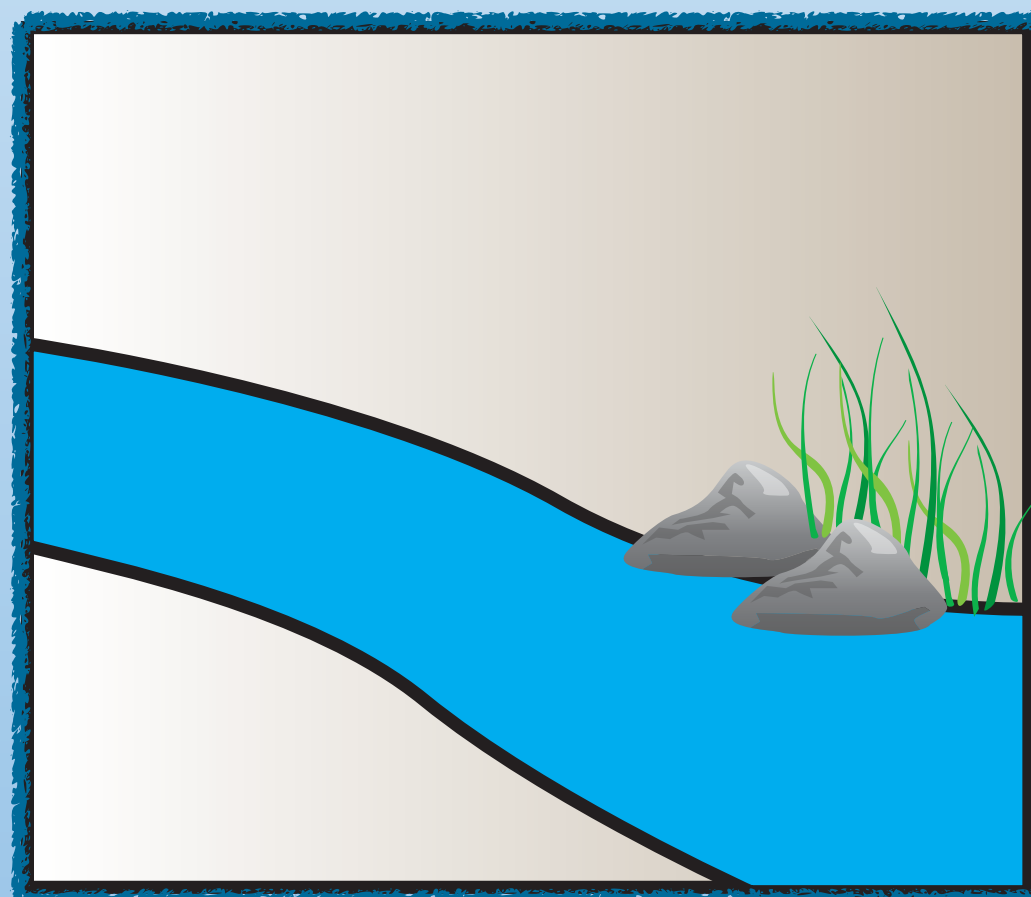
BACK

NEXT

That's correct!
They are
RIVERS and
LAKES.



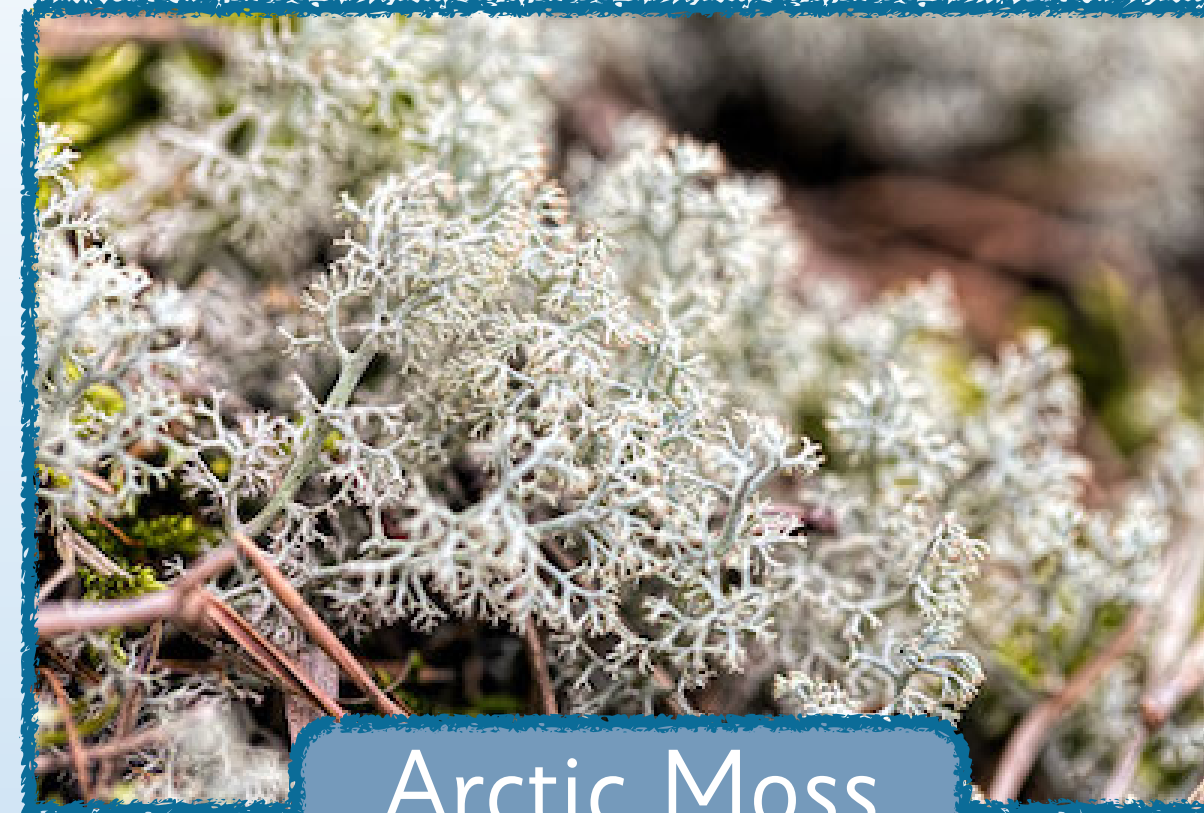
Most of the ice and snow melts in the Arctic summer which forms rivers. The running water flows across the land. Lakes in the Arctic are usually frozen. In summer they melt and become large bodies of water.



BACK

NEXT

In the Arctic summer these small shrubs, mosses and plants grow. They stop flowering when the snow arrives in the winter.



Arctic Moss



Arctic Willow



Cotton Grass



Bearberry



Lichen



BACK

NEXT

Plenary



Can you remember five
physical features found
in the Arctic?
Tell the person next to
you what they are.

BACK

NEXT