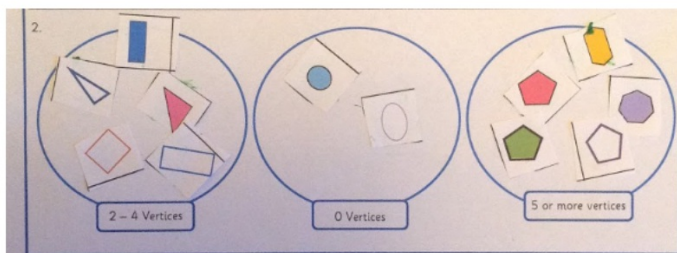
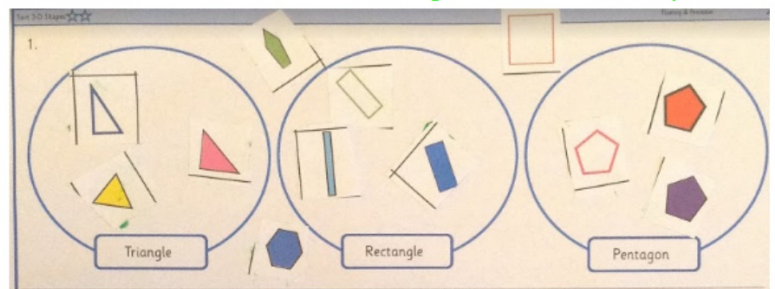


Yesterday we were sorting 2d shapes into groups



You counted vertices
very carefully

You recognised the square

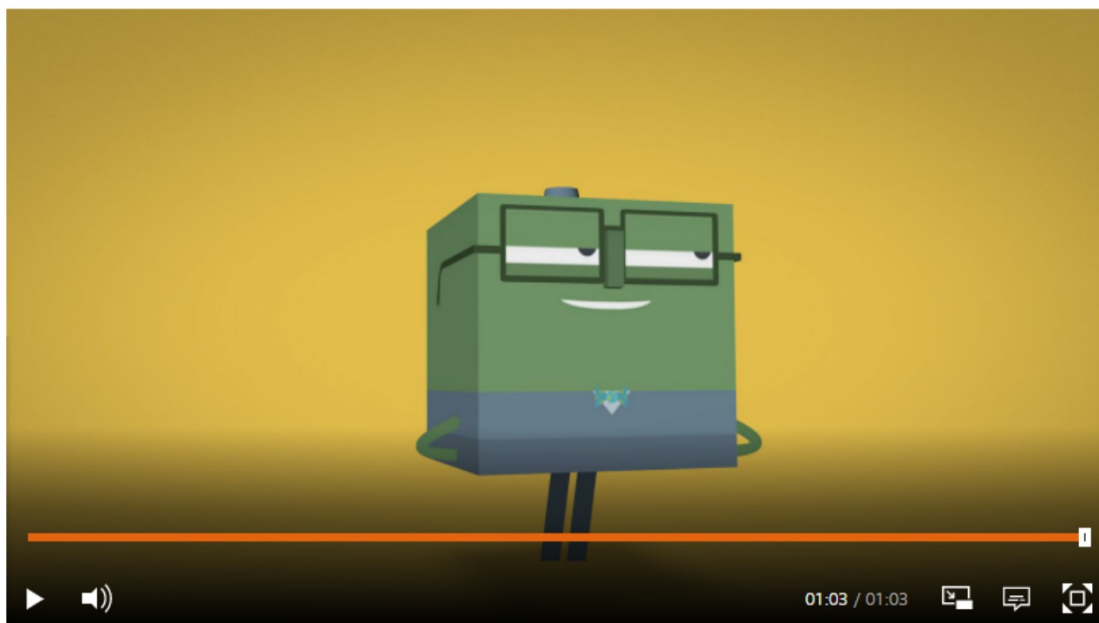


You recognised different types of
triangles

Count the sides and vertices carefully when the
shape looks a little different

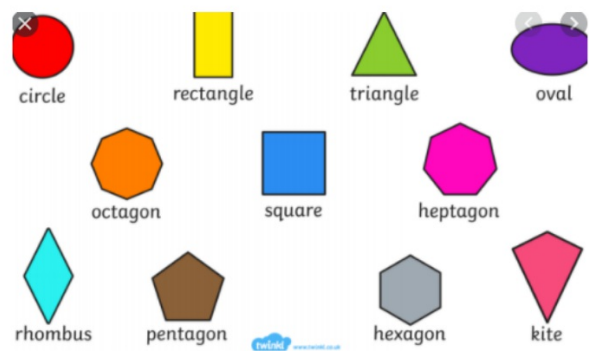
WALT: Name and find 3d shapes

<https://www.bbc.co.uk/bitesize/topics/zjv39j6/articles/zcsjqty>

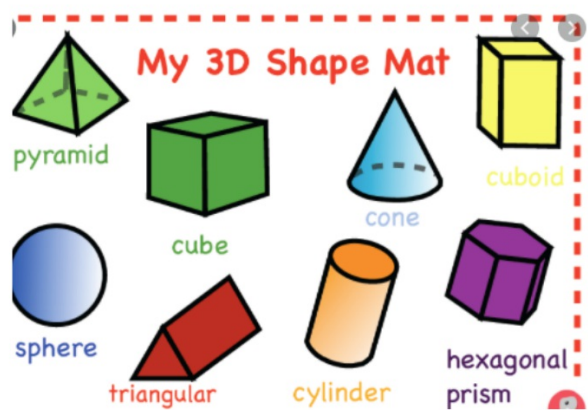


WALT: Name and find 3d shapes

2d shapes are flat



3d shapes are not flat



WALT: Name and find 3d shapes

How many 2d shapes can we see?

How many 3d shapes can we see?

2d

3d



cylinder



cone



triangle



cube



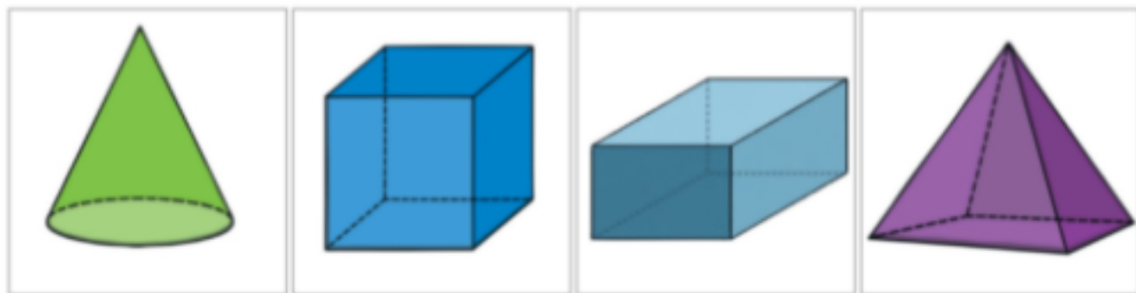
pentagon



octagon

WALT: Name and find 3d shapes [https://www.youtube.com/watch
EiotU](https://www.youtube.com/watch/EiotU)

Spotlight - can we find the different 3d shapes?

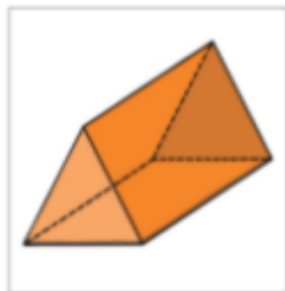


cone

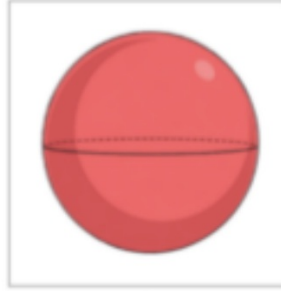
cube

cuboid

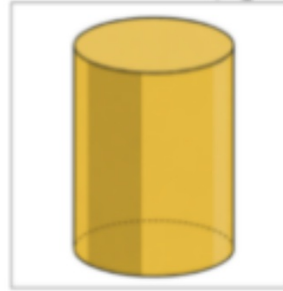
pyramid



triangular prism



sphere



cylinder

